



FLOORPAN

'Laminate Flooring'

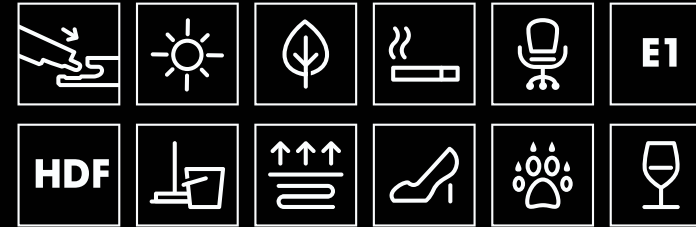
USER MANUAL



**Worlds First Eco Label "Blue Angel"
Belongs to Floorpan for the First Time in Turkey**

"The Blue Angel" is a certificate stating that laminate flooring products do not contain any chemicals that could be hazardous to health or environment.

FLOORPAN
Laminate Flooring



THE ADVANTAGES OF FLOORPAN LAMINATED FLOORING

- Hygienic.
- Maintains its superior form for years.
- Can be installed and disassembled easily due to click lock.
- Easily cleaned.
- Resistant to scratch.
- Many decor and surface alternatives.
- Resistant to UV rays.
- Resistant to household chemicals.
- Suitable to E1 norms and resistant to the growth of mold and bacteria.
- Energy saving.
- Stain-resistant.



Information sur le niveau d'émission de substances volatiles dans l'air intérieur, présentant un risque de toxicité par inhalation, sur une échelle de classe allant de A+ (très faibles émissions) à C (fortes émissions).



CLASSIC	FIX	URBAN	SUN	NATURAL	PRIME	STONEX	ELITE	SUNEX	WINGS	PALACE
15 YEARS WARRANTY	10 YEARS WARRANTY	15 YEARS WARRANTY	10 YEARS WARRANTY	15 YEARS WARRANTY	15 YEARS WARRANTY	25 YEARS WARRANTY	15 YEARS WARRANTY	10 YEARS WARRANTY	25 YEARS WARRANTY	15 YEARS WARRANTY
ACA	ACA	ACA	ACA	ACA	ACA	ACS	ACA	ACA	ACA	ACA





Healthy Living Spaces with the Laminate Flooring Collections Having Hygiene+ Feature

To live a healthy life, It is extremely important to have living spaces that are clean and free from bacteria. Manufactured with advanced technology, all the products in our laminate flooring collections with Hygiene+ feature leave no space for bacteria to reproduce. Bacteria and microbe can be transferred to the flooring via shoes, spilled liquids, pets and other sources. However, the Hygiene+ feature does not allow bacteria and the microbes to reproduce. Both you and your loved ones' health are protected.

The results of tests conducted on our laminate flooring collections with Hygiene+ feature have proved that the bacterial activity expected to be seen is blocked up to 99.9% within 24 hours.

(Tested according to ISO 22196)



FLOORPAN

LAMINATE FLOORING DIMENSIONS



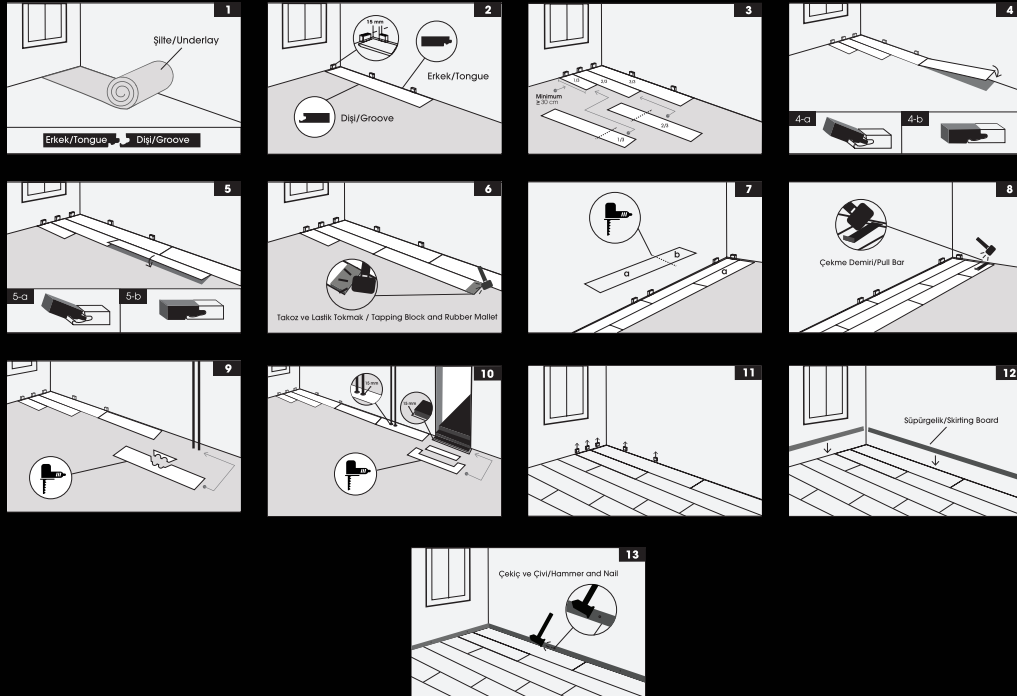
- 1 OVERLAY**
High quality surface protection resistant to wear and scratch
- 2 DECOR PAPER**
Reflecting the characteristics of the product with a unique design
- 3 HDF**
Strong base panel, resistant to high pressure produced as per E1 norm
- 4 BALANCE PAPER**
Protects against humidity and distortion

LAMINATE FLOORING CLASSIFICATION

CLASS	21	22	23	31	32	33	34
UTILIZATION	AC1	AC2	AC3		AC4	AC5	AC6
ABRASION RESISTANCE	≥ 500	≥ 1000	≥ 2000		≥ 4000	≥ 6000	≥ 8500
RESISTANCE TO STAINS	Min. 4 (group 1 ve 2) Min. 3 (group 3)		Min. 5 (group 1 ve 2) Min. 4 (group 3)			Min. 5 (group 1,2 ve 3)	

TECHNICAL SPECIFICATIONS FOR LAMINATE FLOORING FLOORPAN

			CLASSIC	CLASSIC	URBAN	SUN	SUN	STONEX	ELITE	FIX	SUNEX	SUNEX	NATURAL	PRIME	PALACE	WINGS	Test Method	
Thickness	mm	8	8	8	8	8	8	10	12	7	8	8	10	8	10	8	TS-EN 13329+A1	
Width	mm	197	193	197	193	197	197	402	159	197	197	193	160	193	402	197	TS-EN 13329+A1	
Lenght	mm	1205	1295	1205	1295	1205	1205	1206	1380	1205	1205	1295	1205	1205	1206	1205	TS-EN 13329+A1	
Class	-	32	32	32	31	31	31	33	32	31	31	31	32	32	32	33	TS-EN 13329+A1	
Abrasion resistance	-	AC4	AC4	AC4	AC3	AC3	AC3	AC5	AC4	AC3	AC3	AC3	AC4	AC4	AC4	AC5	TS-EN 13329+A1	
Thickness swelling	%	≤18	≤18	≤18	≤18	≤18	≤18	≤15	≤18	≤18	≤18	≤18	≤18	≤18	≤18	≤15	ISO 24336	
Resistance to impact	Small Ball	N	≥12	≥12	≥12	≥8	≥8	≥15	≥12	≥8	≥8	≥8	≥12	≥12	≥15	≥15	TS-EN 13329+A1	
	Large Ball	mm	≥750	≥750	≥750	≥500	≥500	≥1000	≥750	≥500	≥500	≥500	≥750	≥750	≥1000	≥1000	TS-EN 13329+A1	
Warranty domestic / Commercial	years	15/10	15/10	15/10	15/10	15/10	15/10	25/15	15/10	10/5	10/5	10/5	15/10	15/10	25/15	25/15		
Resistance to staining		Min. 5 (group 1 and 2) Min. 4 (group 3)							Min. 5 (group 1 and 2) Min. 4 (group 3)							TS-EN-438-2_5		
Surface soundness	N/mm²	≥1.25	≥1.25	≥1.25	≥1.0	≥1.0	≥1.0	≥1.25	≥1.25	≥1.0	≥1.0	≥1.0	≥1.0	≥1.25	≥1.25	≥1.25	≥1.25	TS-EN 13329+A1
Lock strength	Lenght	kN/m	f10,2 ≥ 1	f10,2 ≥ 1	f10,2 ≥ 1	-	-	f10,2 ≥ 1	f10,2 ≥ 1	-	-	-	f10,2 ≥ 1	f10,2 ≥ 1	f10,2 ≥ 1	f10,2 ≥ 1	ISO 24334	
	Width	kN/m	fs0,2 ≥ 2	fs0,2 ≥ 2	fs0,2 ≥ 2	-	-	fs0,2 ≥ 2	fs0,2 ≥ 2	-	-	-	fs0,2 ≥ 2	fs0,2 ≥ 2	fs0,2 ≥ 2	fs0,2 ≥ 2		
Effect of a castor chair	25,000 Cycles	No Damage							No Damage							TS-EN 425:2002		
Effect of a furniture leg	-	No Damage							No Damage							TS-EN 424		
Opening between elements	mm	≤0,20							≤0,20							TS-EN 13329+A1		
Height diffirence between elements	mm	≤0,15							≤0,15							TS-EN 13329+A1		
Humidity	%	4-10							4-10							TS-EN 322		
Fire resistance	Sinif	C _n S1	C _n S1	C _n S1	C _n S1	C _n S1	C _n S1	C _n S1	C _n S1	C _n S1	C _n S1	C _n S1	C _n S1	C _n S1	C _n S1	C _n S1	TS-EN 9239-1	
Formaldehyde emission	mg/m²h	≤3,5 (E1)	≤3,5 (E1)	≤3,5 (E1)	-	-	-	-	-	≤3,5 (E1)	≤3,5 (E1)	≤3,5 (E1)	≤3,5 (E1)	≤3,5 (E1)	E1	≤3,5	TS-EN 12460-3	
Slip resistance	Class	DS	DS	DS	-	-	-	-	-	DS	DS	DS	DS	DS	-	-	TS-EN-13893:2003	
Impact sound reduction	dB	14	14	14	-	-	-	-	-	-	14	14	14	14	14	15	TS-EN-ISO 10140-3	
Thermal resistance	(m²K)/W	0,05	0,05	0,05	-	-	-	-	-	0,05	0,05	0,05	0,05	0,05	0,05	0,0614	TS-EN-12667:2001	



A. Before Installation

Temperature and humidity conditions of the floor and areas where flooring is to be installed:

Temperature and humidity levels of the floor and areas where flooring is to be installed must conform with the suitable temperature and relative humidity conditions for the flooring before installation, during installation and after the process. In new and renovated buildings, the room must be ventilated and must not be kept closed for long to balance room temperature and humidity levels. The laminate flooring must be kept for 48 hours before installation to fit into the areas where installation is to be made. The product's warranty will be void if the 48-hour requirement is not met. (1 - Temperature of the areas where installation is to be made must be min. +18°C. 2 - Floor temperature must be min. +15°C. 3 - Relative humidity rate of the areas where installation is to be made must be 40-70 percent.)

Surface of the floor where installation is to be made:

All surfaces on which laminate flooring is to be installed must be ready for the process, according to the technical conditions that must be considered.

Meet the below-specified conditions, during floor inspection:

- Make sure that the floor is completely dry.
- Check the surface flatness. (Fluctuation on the surface must be <2 mm per meter.)
- Check the floor hardness.
- Clean the surface of the floor where installation is to be made (for dust, dirt, etc.).

It can be installed on concrete and ceramic tile surfaces. If there is a previous application on the floor, it should be confirmed that the floor is strong enough not to cause any problem to the laminate flooring.

The flooring can be installed on underfloor heating systems with water circulation. In such case, please use kraft paper instead of foam.

In addition, the product can be installed on electric underfloor heating applications (surface temperature control) if the system is embedded in concrete or concrete finish (if the heating system is not on top of the concrete layer). The floor temperature must not exceed 28°C. Please check with your heating system manufacturer to determine whether the surface temperature will not exceed 28°C before using the adjustable heating plate as flooring. Standard plate-based electric underfloor

heating systems available in the market cause the surfaces to heat up much more than 28°C in extremely sudden temperature changes. Therefore, standard plate-based electric underfloor heating systems are not suitable surfaces for flooring.

Unsuitable floors are:

- Floors covered with textiles (carpets, rugs, etc.).
- Floors covered with PVC, linoleum, wood/laminate flooring and so on.
- Wet floors such as toilets, bathrooms, saunas.
- Interiors of vehicles.

Basic Rules for Flooring Installation

- The surface must be completely covered with PE foam, which is used for moisture insulation. The PE foam, used as base fitting for flooring, must be laid in parallel with the length of the floor tiles and must cover the floor completely to ensure sound, heat and moisture insulation and eliminate surface irregularities (<2 mm). The foam strips must be laid adjacent to one another and no gaps must be left between sheets.
- Because laminate floors are installed as a floating system, they are not screwed, nailed or glued to the floor.
- During the installation, the distance between joints along the width of two panels must be at least 30 cm.
- The panels, which are manufactured with curved sides and/or special patterns (such as decor tiles), must be shifted accordingly to match the curved side and/or the pattern.
- All laminate flooring panels must have at least 15 mm of clearance in between panels and fixed edges (such as walls, heating pipes, doors, doorframes, sills and so on). The product's warranty will be void if the gap is less than 15 mm.
- The flooring area must not exceed 10 m in length and 8 m in width. Transition profiles must be used in rooms larger than 10x8 m and panel gaps must be at least 20 mm. Transition profiles must also be used in room transitions. Otherwise, the product's warranty will be void.
- Damaged or unfit panels must be separated before and during installation.
- Our products are manufactured in multiple facilities. The floor panels from multiple facilities must not be installed. Otherwise, the product's warranty will be void. Products from the same facility must be grouped according to their production date, and panels with close production dates must be

used during installation.

- The installation must be stopped in case of a visible error such as a difference in gloss, level, tone, gap width, or if it is a damaged product.
- The color tone changes between the elements are due to its characteristics (such as knots, patterns and color changes) and are not regarded as defects.
- The shipment must be checked for damages and missing items upon delivery. In case of a defect, it must be recorded through a report detailing the faulty product amount and this report must be signed by the delivery driver. Otherwise, the product's warranty will be void.
- If the products that are thought to be faulty are removed after installation without the knowledge of the installing company's personnel, the product's warranty will be void.
- It is recommended that the panels are installed along the window in square rooms and along the length in rectangular rooms.
- The aforementioned conditions only apply to our first-class quality products. Other products are not under warranty.

B - Installation

1. (Figure 1) Place the underlay (foam) and check tongues and grooves across its length and width.
2. (Figure 2) Place panels with both tongues facing the wall starting at the left corner of the room. Place wall spacers (15 mm) before the installation.
3. (Figure 3) After the first panel is placed with both tongues facing the wall, place 2/3 of the other panel behind it and follow it with 1/3 of another panel, ensuring that the cut sides are facing the wall.
4. (Figure 4) Lower the grooved side to the tongue side with a 30-degree angle and click it into place while ensuring a flat surface to maintain the installation's integrity. See 4A and 4B for details.
5. (Figure 5) Lock the panels lengthwise during installation. See 5A and 5B for details.
6. (Figure 6) Lock the panels by hammering them widthwise using a tapping block and a rubber mallet. Avoid hard impacts as they may damage the panel locks.
7. (Figure 7) After calculating and marking (A and B) the wedging between panels and cutting them accordingly, lock the panels lengthwise. If the B piece is longer than 30 cm, it can be used as a starter in the next row.
8. (Figure 8) Hammer the panel in place using a pull bar and a tapping block.
9. (Figure 9) Cut the panel in places around heating pipes using a jigsaw making sure to leave at least 15 mm of a gap between the fixed places. After passing the removed parts around the pipe, glue them together with the appropriate adhesive.

10. (Figure 10) Cut the flooring to leave a 15-mm gap between the panel and the edges of the steps.
11. (Figure 11) Remove all spacers.
12. (Figure 12) Cut all the skirting boards to their sizes and prepare them for installation.
13. (Figure 13) Fix the skirting boards to the wall using a hammer and nails.

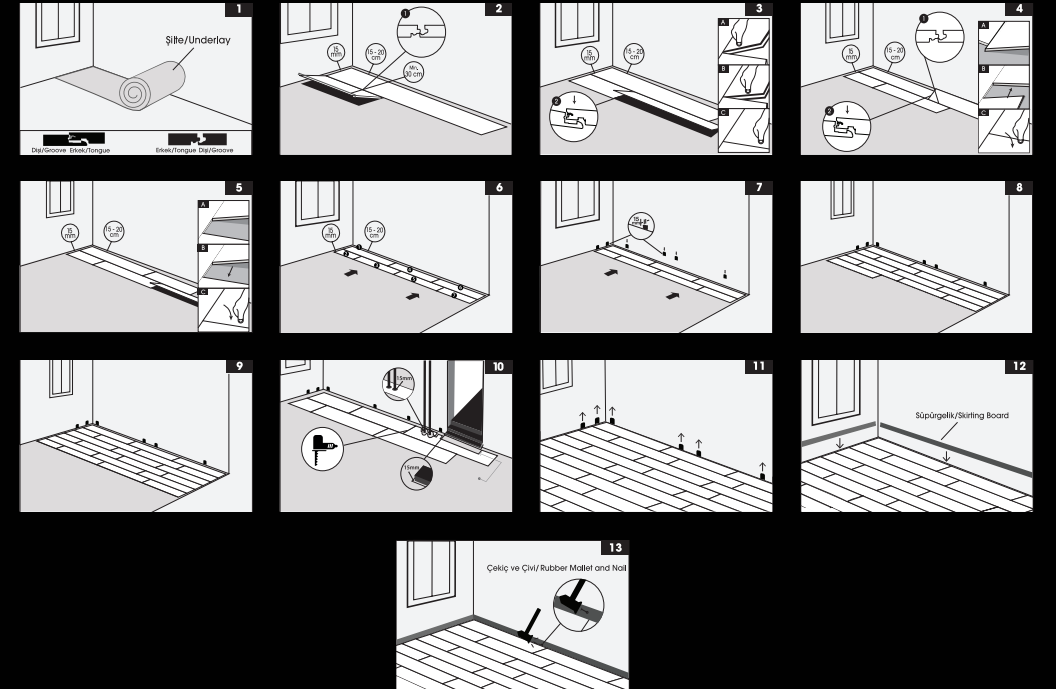
C - After Installation

- Rubber or felt pieces must be attached to the legs of all fixed or movable furniture.
- Heavy furniture, in particular, must be lifted to move.
- The wheels of wheeled furniture, seats and chairs must be soft.
- Our products are manufactured in accordance with the EN 13329 laminate floor coverings standard.

The laminates must be cleaned without water and using a well-rung, lint-free microfiber cloth. Unless otherwise stated, our products are not water-resistant and must be protected from water exposure.

- Corrosive products (such as powder detergents) must not be used.
- The laminate must not be sanded.

UNIFIT®
PATENTED TECHNOLOGY



A. Before Installation**Temperature and humidity conditions of the floor and areas where flooring is to be installed:**

Temperature and humidity levels of the floor and areas where flooring is to be installed must conform with the suitable temperature and relative humidity conditions for the flooring before installation, during installation and after the process. In new and renovated buildings, the room must be ventilated and must not be kept closed for long to balance room temperature and humidity levels. The laminate flooring must be kept for 48 hours before installation to fit into the areas where installation is to be made. The product's warranty will be void if the 48-hour requirement is not met. (1 - Temperature of the areas where installation is to be made must be min. +18°C. 2 - Floor temperature must be min. +15°C. 3 - Relative humidity rate of the areas where installation is to be made must be 40-70 percent.)

Surface of the floor where installation is to be made:

All surfaces on which laminate flooring is to be installed must be ready for the process, according to the technical conditions that must be considered.

Meet the below-specified conditions, during floor inspection:

- Make sure that the floor is completely dry.
- Check the surface flatness. (Fluctuation on the surface must be <2 mm per meter.)
- Check the floor hardness.
- Clean the surface of the floor where installation is to be made (for dust, dirt, etc.).

It can be installed on concrete and ceramic tile surfaces. If there is a previous application on the floor, it should be confirmed that the floor is strong enough not to cause any problem to the laminate flooring.

The flooring can be installed on underfloor heating systems with water circulation. In such case, please use kraft paper instead of foam.

In addition, the product can be installed on electric underfloor heating applications (surface temperature control) if the system is embedded in concrete or concrete finish (if the heating system is not on top of the concrete layer). The floor temperature must not exceed 28°C. Please check with your heating system manufacturer to determine whether the surface temperature will not exceed 28°C before using the adjustable heating plate as flooring. Standard plate-based electric underfloor heating systems available in the market cause the surfaces to heat up much more than 28°C in

extremely sudden temperature changes. Therefore, standard plate-based electric underfloor heating systems are not suitable surfaces for flooring.

Unsuitable floors are:

- Floors covered with textiles (carpets, rugs, etc.).
- Floors covered with PVC, linoleum, wood/laminate flooring and so on.
- Wet floors such as toilets, bathrooms, saunas.
- Interiors of vehicles.

Basic Rules for Flooring Installation

- The surface must be completely covered with PE foam, which is used for moisture insulation. The PE foam, used as base fitting for flooring, must be laid in parallel with the length of the floor tiles and must cover the floor completely to ensure sound, heat and moisture insulation and eliminate surface irregularities (<2 mm). The foam strips must be laid adjacent to one another and no gaps must be left between sheets.
- Because laminate floors are installed as a floating system, they are not screwed, nailed or glued to the floor.
- During the installation, the distance between joints along the width of two panels must be at least 30 cm.
- The panels, which are manufactured with curved sides and/or special patterns (such as decor tiles), must be shifted accordingly to match the curved side and/or the pattern.
- All laminate flooring panels must have at least 15 mm of clearance in between panels and fixed edges (such as walls, heating pipes, doors, doorframes, sills and so on). The product's warranty will be void if the gap is less than 15 mm.
- The flooring area must not exceed 10 m in length and 8 m in width. Transition profiles must be used in rooms larger than 10x8 m and panel gaps must be at least 20 mm. Transition profiles must also be used in room transitions. Otherwise, the product's warranty will be void.
- Damaged or unfit panels must be separated before and during installation.
- Our products are manufactured in multiple facilities. The floor panels from multiple facilities must not be installed. Otherwise, the product's warranty will be void. Products from the same facility must be grouped according to their production date, and panels with close production dates must be used during installation.

- The installation must be stopped in case of a visible error such as a difference in gloss, level, tone, gap width, or if it is a damaged product.
- The color tone changes between the elements are due to its characteristics (such as knots, patterns and color changes) and are not regarded as defects.
- The shipment must be checked for damages and missing items upon delivery. In case of a defect, it must be recorded through a report detailing the faulty product amount and this report must be signed by the delivery driver. Otherwise, the product's warranty will be void.
- If the products that are thought to be faulty are removed after installation without the knowledge of the installing company's personnel, the product's warranty will be void.
- It is recommended that the panels are installed along the window in square rooms and along the length in rectangular rooms.
- The aforementioned conditions only apply to our first-class quality products. Other products are not under warranty.

B - Installation

1. (Figure 1) Place the underlay (foam) and check tongues and grooves across its length and width.
2. (Figure 2) Place the first element tongue side facing the wall leaving 15-20 cm between its length and the wall (for easier installation) and a 15-mm gap across its width. Cut a second element with a minimum length of 30 cm and place it as shown. Please note that the gap between the widthwise (short edge) joints must not be shorter than 30 cm.
3. (Figure 3) Place the third element lengthwise. Slide it at a 30-degree angle until the joints along its width overlap and slowly install the flooring. Follow the procedures shown in 3-a, 3-b and 3-c for floor installation.
4. (Figure 4) Place the fourth element lengthwise. Slide it at a 30-degree angle until the joints along its width overlap and slowly install the flooring. Follow the procedures shown in 4-a, 4-b and 4-c for floor installation.
5. (Figure 5) Place the fifth element lengthwise. Slide it at a 30-degree angle until the joints along its width overlap and slowly install the flooring. Follow the procedures shown in 5-a, 5-b and 5-c for floor installation.
6. (Figure 6) Complete the installation in two rows, laying panels crosswise.
7. (Figure 7) Place the spacers (15 mm), used to keep the distances between the wall and the flooring, between the wall and the panel.

8. (Figure 8) Beginning at the third row, place the elements lengthwise at a 30-degree angle until they overlap widthwise and slowly continue the installation.
9. (Figure 9) Repeat these steps until the installation is complete.
10. (Figure 10) Use the appropriate cutting tools to cut panels around the heating pipes to leave a 15-mm gap between the panels and the fixed places. Glue the pieces using an appropriate adhesive. Cut the flooring to leave a 15-mm gap between the panel and the edges of the steps.
11. (Figure 11) Remove all spacers.
12. (Figure 12) Cut all the skirting boards to their sizes and prepare them for installation.
13. (Figure 13) Fix the skirting boards to the wall using a hammer and nails.

C- After Installation

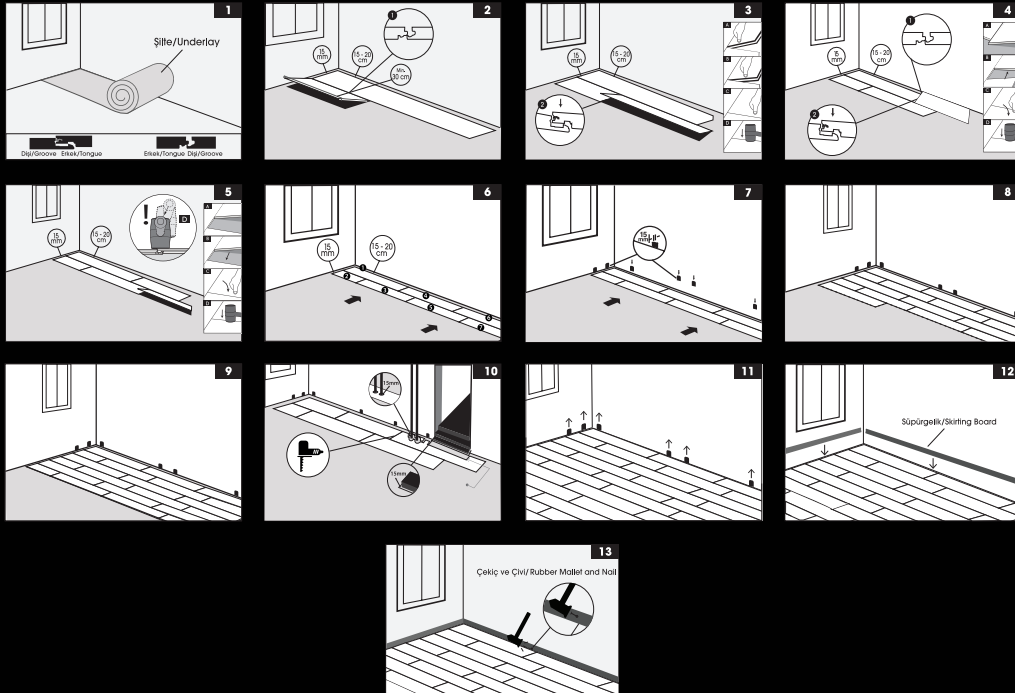
- Rubber or felt pieces must be attached to the legs of all fixed or movable furniture.
- Heavy furniture, in particular, must be lifted to move.
- The wheels of wheeled furniture, seats and chairs must be soft.
- Our products are manufactured in accordance with the EN 13329 laminate floor coverings standard.

The laminates must be cleaned without water and using a well-rung, lint-free microfiber cloth. Unless otherwise stated, our products are not water-resistant and must be protected from water exposure.

- Corrosive products (such as powder detergents) must not be used.
- The laminate must not be sanded.

UNIDROP

PATENTED TECHNOLOGY ®



A - Before Installation

Temperature and humidity conditions of the floor and areas where flooring is to be installed:

Temperature and humidity levels of the floor and areas where flooring is to be installed must conform with the suitable temperature and relative humidity conditions for the flooring before installation, during installation and after the process. In new and renovated buildings, the room must be ventilated and must not be kept closed for long to balance room temperature and humidity levels. The laminate flooring must be kept for 48 hours before installation to fit into the areas where installation is to be made. The product's warranty will be void if the 48-hour requirement is not met. (1 - Temperature of the areas where installation is to be made must be min. +18°C. 2 - Floor temperature must be min. +15°C. 3 - Relative humidity rate of the areas where installation is to be made must be 40-70 percent.)

Surface of the floor where installation is to be made:

All surfaces on which laminate flooring is to be installed must be ready for the process, according to the technical conditions that must be considered.

Meet the below-specified conditions, during floor inspection:

- Make sure that the floor is completely dry.
- Check the surface flatness. (Fluctuation on the surface must be <2 mm per meter.)
- Check the floor hardness.
- Clean the surface of the floor where installation is to be made (for dust, dirt, etc.).

It can be installed on underfloor heating systems with water circulation. If there is a previous application on the floor, it should be confirmed that the floor is strong enough not to cause any problem to the laminate flooring.

The flooring can be installed on underfloor heating systems with water circulation. In such case, please use kraft paper instead of foam.

In addition, the product can be installed on electric underfloor heating applications (surface temperature control) if the system is embedded in concrete or concrete finish (if the heating system is not on top of the concrete layer). The floor temperature must not exceed 28°C. Please check with your heating system manufacturer to determine whether the surface temperature will not exceed

28°C before using the adjustable heating plate as flooring. Standard plate-based electric underfloor heating systems available in the market cause the surfaces to heat up much more than 28°C in extremely sudden temperature changes. Therefore, standard plate-based electric underfloor heating systems are not suitable surfaces for flooring.

Unsuitable floors are:

- Floors covered with textiles (carpets, rugs, etc.).
- Floors covered with PVC, linoleum, wood/laminate flooring and so on.
- Wet floors such as toilets, bathrooms, saunas.
- Interiors of vehicles.

Basic Rules for Flooring Installation

- The surface must be completely covered with PE foam, which is used for moisture insulation. The PE foam, used as base fitting for flooring, must be laid in parallel with the length of the floor tiles and must cover the floor completely to ensure sound, heat and moisture insulation and eliminate surface irregularities (<2 mm). The foam strips must be laid adjacent to one another and no gaps must be left between sheets.
- Because laminate floors are installed as a floating system, they are not screwed, nailed or glued to the floor.
- During the installation, the distance between joints along the width of two panels must be at least 30 cm.
- The panels, which are manufactured with curved sides and/or special patterns (such as decor tiles), must be shifted accordingly to match the curved side and/or the pattern.
- All laminate flooring panels must have at least 15 mm of clearance in between panels and fixed edges (such as walls, heating pipes, doors, doorframes, sills and so on). The product's warranty will be void if the gap is less than 15 mm.
- The flooring area must not exceed 10 m in length and 8 m in width. Transition profiles must be used in rooms larger than 10x8 m and panel gaps must be at least 20 mm. Transition profiles must also be used in room transitions. Otherwise, the product's warranty will be void.
- Damaged or unfit panels must be separated before and during installation.
- Our products are manufactured in multiple facilities. The floor panels from multiple facilities must

not be installed. Otherwise, the product's warranty will be void. Products from the same facility must be grouped according to their production date, and panels with close production dates must be used during installation.

- The installation must be stopped in case of a visible error such as a difference in gloss, level, tone, gap width, or if it is a damaged product.
- The color tone changes between the elements are due to its characteristics (such as knots, patterns and color changes) and are not regarded as defects.
- The shipment must be checked for damages and missing items upon delivery. In case of a defect, it must be recorded through a report detailing the faulty product amount and this report must be signed by the delivery driver. Otherwise, the product's warranty will be void.
- If the products that are thought to be faulty are removed after installation without the knowledge of the installing company's personnel, the product's warranty will be void.
- It is recommended that the panels are installed along the window in square rooms and along the length in rectangular rooms.
- The aforementioned conditions only apply to our first-class quality products. Other products are not under warranty.

B – Installation

1. (Figure 1) Place the underlay (foam) and check tongues and grooves across its length and width.
2. (Figure 2) Place the first element tongue side facing the wall leaving 15–20 cm between its length and the wall (for easier installation) and a 15-mm gap across its width. Cut a second element with a minimum length of 30 cm and place it as shown. Please note that the gap between the widthwise (short edge) joints must not be shorter than 30 cm.
3. (Figure 3) Place the third element lengthwise. Slide it at a 30-degree angle until the joints along its width overlap and slowly install the flooring. Use a rubber mallet to completely join the elements widthwise. The hammering must be off set as shown. Follow the procedures shown in 3-a, 3-b, 3-c and 3-d for floor installation.
4. (Figure 4) Place the fourth element lengthwise. Slide it at a 30-degree angle until the joints along its width overlap and slowly install the flooring. Follow the procedures shown in 4-a, 4-b and 4-c for floor installation. The hammering must be off set as shown. Follow the procedures shown in 4-a, 4-b, 4-c, and 4-d.
5. (Figure 5) Place the fifth element lengthwise. Slide it at a 30-degree angle until the joints along

its width overlap and slowly install the flooring. Follow the procedures shown in 5-a, 5-b and 5-c for floor installation. The hammering must be off set as shown. Follow the procedures shown in 5-a, 5-b, 5-c, and 5-d.

6. (Figure 6) Complete the installation in two rows, laying panels crosswise.

7. (Figure 7) Place the spacers (15 mm), used to keep the distances between the wall and the flooring, between the wall and the panel.

8. (Figure 8) Beginning at the third row, place the elements lengthwise at a 30-degree angle until they overlap widthwise and slowly continue the installation.

9. (Figure 9) Repeat these steps until the installation is complete.

10. (Figure 10) Use the appropriate cutting tools to cut panels around the heating pipes to leave a 15-mm gap between the panels and the fixed places. Glue the pieces using an appropriate adhesive. Cut the flooring to leave a 15-mm gap between the panel and the edges of the steps.

11. (Figure 11) Remove all spacers.

12. (Figure 12) Cut all the skirting boards to their sizes and prepare them for installation.

13. (Figure 13) Fix the skirting boards to the wall using a hammer and nails.

C – Disassembly

1. When disassembling lengthwise panels, lift the elements carefully to separate the row and pull the row from the joints as shown in Figure 6.

2. Lift the tongued profile at an angle and pull it from its joint as shown in Figure 7.

D – After Installation

- Rubber or felt pieces must be attached to the legs of all fixed or movable furniture.
- Heavy furniture, in particular, must be lifted to move.
- The wheels of wheeled furniture, seats and chairs must be soft.
- Our products are manufactured in accordance with the EN 13329 laminate floor coverings standard.

The laminates must be cleaned without water and using a well-rung, lint-free microfiber cloth. Unless otherwise stated, our products are not water-resistant and must be protected from water exposure.

- Corrosive products (such as powder detergents) must not be used.
- The laminate must not be sanded.

Conditions Not Covered by Warranty

- Conditions not covered by warranty
 - Any elements which are damaged, unpacked and not in first quality are not covered by the warranty.
 - Delivery or installation of the products by unauthorized dealers, failure to comply with installation instructions and quality manual.
 - Damage caused by improper application that is inconsistent with maintenance and installation instructions.
- Manipulation on certificate of guarantee.
- Transfer of the certificate of guarantee to someone else for any reason.
 - The certificate of guarantee is not valid if the certificate together with the invoice or its photocopy is not submitted.
 - Kastamonu Entegre Aaç Sanayi ve Ticaret AŞ reserves the right to inspect the product and to authorize third parties for inspection.
 - If the Floorpan Laminate Flooring is used other than foreseen cases, the rights and claims within the warranty will be canceled.
 - Out-of-warranty service and support services are provided by Kastamonu Entegre dealers for fee.

Important Notes

- Please do not accept damaged products or products with damaged package.
- Installation and service of the products should be done by expert technicians of authorized dealers. Get the approved certificate of guarantee together with the invoice.
- Ask for the brand “Kastamonu Entegre” for all auxiliary materials used (Skirting).
- In case of product return, décor equivalent of the product may be provided considering the existing stocks.
- All technical information about Floorpan Laminate Flooring is available at the “Floorpan Laminate Flooring User’s Manual” and you can consult the authorized dealers in case of necessity.

Suggestions for Maintenance, Usage and Cleaning

- Put a mat especially on the entrances, door sills and walkways with intense use. This application will increase the life of your product as materials such as sand and mud are abrasive.
 - Pieces made of plastic or felt should be put under the feet of fixed or moving furniture.
 - In order to maintain the moisture level of Floorpan Laminate Floor and for feeling comfortable, an environment with a relative humidity of about 50-60% and room temperature of about 20°C is required. If humidity of the air falls below that value, the use of electronic air humidifier is recommended.
 - Floorpan Laminate Flooring is suitable for floor heating systems. However, the subfloor temperature must not exceed 28°C. Also, moisture of the subfloor should not exceed 2% before the flooring installation. Subfloor tests and installations in the system should be made in accordance with the instructions given on the user's manual.
 - Floorpan Laminate Flooring should be cleaned with vacuum cleaner during daily maintenance.
 - Cleaning applications outside daily use should be done with only very well squeezed, lint-free microfiber cloth. Never leave it moist or wet for long periods of time. Prefer only suitable cleaning materials and wood cleaners. Do not use lacquer and chemical materials that form a layer. When you purchase Floorpan Laminate Flooring from the store, ask for "Floorpan Laminate Flooring User's Manual".
- Floorpan Laminate Flooring is stainproof but special flooring cleaners can be used for the stains coming out hard.

Warranty Conditions

- The warranty period starts from the delivery date of the goods.
- Warranty period is 10 years for, Floorpan Sun Laminate Flooring, 5 years for Floorpan Nova Laminate Flooring, 25 years for Floorpan Boutique and Stonex Laminate Flooring and 15 years for Floorpan Urban, Floorpan Natural, Floorpan Register, Floorpan Classic Laminate Flooring. The delivery date and notification date of products starts from the delivery date to the consumer together with the signed invoice and dispatch note.
- In case of manufacturing failure within the scope of warranty, both due to material or installation errors, the product should be repaired free of cost under any name including labor cost, price for replaced parts or any other name.
- In case of failure of the product within the warranty period, provided to be within the warranty period, the period for repair should be added to the warranty period.
- Product repair period is maximum 30 business days. This period starts from the date that the failure was notified to the service unit, in case the service unit is not available by the product seller, main dealer, regional dealer or manufacturer.
- For the problems that may arise with regard to the warranty document, application may be done to Ministry of Industry and Trade, General Directorate of Protection of Consumer and Competition.
- The warranty can not be transferred. The warranty provided is not valid for any purpose other than intended use.
- The warranty is valid for the specified period of time and only for the malfunction of the product. No rights and indemnities other than that can be claimed under any other name.
- Provided to be within the warranty period mentioned above, Floorpan laminate flooring should be replaced free of charge if the same fault is repeated more than twice or if different faults occur more than four times and repair can not be done.
- Floorpan Laminate Flooring products are under the mutual warranty of our manufacturer company and our main dealers.

bridging **nature and life**

www.keas.com.tr
www.floorpan.com.tr

