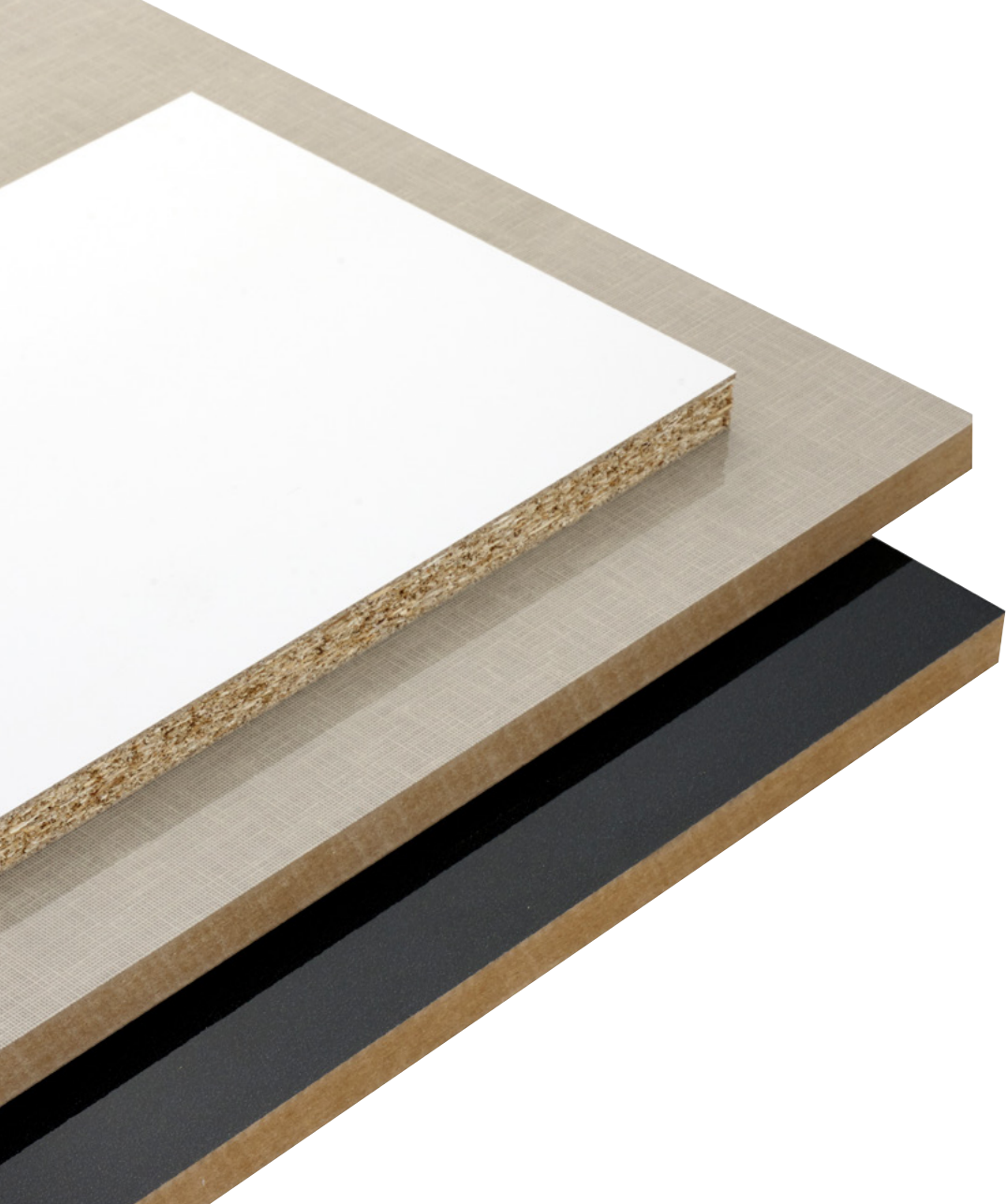




PANEL

USER MANUAL





RAW **MDF** / **YONGA LEVHA** / **HDF**



MELAMINE FACED **MDF** / **YONGA LEVHA**

RAW MDF

MEDEPAN
MEDEPAN PYS - MEDEPAN F - MEDEPAN L
MAXIPAN - NEOPAN - SUPERPAN
MEDEPAN FR
MEDEPAN MR

RAW PARTICLE BOARD

TEKNOPAN - YONGAPAN
EKOPAN - EXTRAPAN
TEKNOPAN FR - YONGAPAN FR
TEKNOPAN MR - YONGAPAN MR

HDF

MELAMINE FACED MDF

MEDELAM
MAXILAM - NEOLAM - SUPERLAM
MEDELAM FR
MEDELAM MR

MELAMINE FACED PARTICLE BOARD

TEKNOLAM - YONGALAM
EKOLAM - EXTRALAM
TEKNOLAM FR - YONGALAM FR
TEKNOLAM MR - YONGALAM MR

PVC/PET FACED PANEL

EVOGLOSS

ACRYLIC FACED PANEL

ACRYLIC PANEL NON SCRATCH
ACRYLIC PANEL INDUSTRIAL

UV ACRYLIC LACQUERED GLOSS PANEL

GLOSSMAX PRO
GLOSSMAX

UV ACRYLIC LACQUERED MATT PANEL

MATTPLUS

COLORLED PANEL

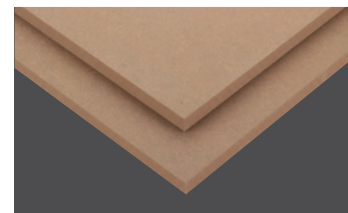
COLORPAN

PRINTED BOARD

PRINTPAN (MDF)
PRINTPAN (PARTICLE BOARD)



What is **MDF?**



MDF

MDF (Medium Density Fiberboard) is a product obtained by thermoplastic drying of the fibers obtained from wooden or other lignocellulosic raw materials by adding synthetic adhesive to a certain degree of moisture and then pressing the plate formed under temperature and pressure.

- MDF is "medium density fiberboard."

Areas Of Usage

- MDF is an alternative to solid wood in many applications.
- The membrane and acrylic caps are manufactured by MDF for milling.
- It is used as a floor in any decorative foil, PVC and wood coatings.
- It is used in all living spaces such as kitchen and bathroom cabinets, bedrooms, offices.
- It is used as a door panel.
- It is used in manufacture of profile and drawer faces and parts.
- Due to the high and low roughness of the surface density, it can be used as a ready-to-use product by covering the single face or double faces by a lacquered treatment.

MDF Advantages

- The density distribution of the fibers has a high profile on the lower and upper surfaces, and a lower profile compared to the surface as it converges towards the middle.
- It is suitable for cutting with a machine and there is no breaking on edges.
- No gaps between material particles occurs and it can be processed.
- It provides possibility to cut error-free, and drill and grind on the CNC work worktops.
- It has a homogeneous and smooth surface.

PANEL USER MANUAL

- It can be painted and polished.
- A pattern can be printed and embossed on it.
- It creates a good base for foil and wood coating.

MDF Classification



MDF TYPE

Requirements for the general purpose boards to be used in dry conditions

MDF LA TYPE

Requirements for the load bearing boards to be used in dry conditions

L-MDF TYPE

Requirements for the light MDF boards to be used in dry conditions

UL1-MDF TYPE

Requirements for the very light MDF boards to be used in dry conditions

UL2-MDF TYPE

Requirements for the very light MDF boards to be used in dry conditions



MDF HLS TYPE

Requirements for the load bearing boards to be used in damp conditions

L-MDF H TYPE

Requirements for the light MDF boards to be used in damp conditions

MDF H TYPE

Requirements for the general purpose boards to be used in damp conditions



MDF-RWH TYPE

Requirements for the boards to be used as hard sub-floors on the roofs and walls



What is
YONGA LEVHA?



PARTICLE BOARD

Particle Board is a material obtained by mixing the chips of wood or lignocellulosic plants with artificial resin glues (Urea formaldehyde and PMDI based glues) and laying them in layers as sub, medium and top layers and then pressing them at a high temperature and pressure (forming).

Areas Of Usage

They are suitable for use in all living spaces such as kitchen and bathroom cabinets and office furniture.

- It provides advantage to use in the exhibition stands.
- It can be used in the packaging industry.
- It can be used to make partitions, doors and wall boards in the interior side of the buildings.

WARNING! Its surface is not suitable for machining (grooving, forming) on the CNC machines like MDF. It is advantageous to use in the production of the mounted-dismounted furniture.

Particle Board Advantages

- The particle boards consist of durable middle layer and smooth surfaces.
- They are perfect for a variety of laminate applications, and with their low formaldehyde content body structures, they are ideal for a wide range of applications.
- Through their smooth surface, light wood effect, high surface durability, low dust content, high stability, very good lamination characteristics and square shape they enable to work clean and particle-free.
- They are suitable for furniture, interior decoration and all kinds of finishes.
- Melamine film can be applied on them.

Particle Board Classification



P1
Requirements for the general purpose boards that may be used in dry conditions

P2
Requirements for the boards that may be used for any interior hardware applications in dry conditions

P4
Requirements for the load bearing boards that may be used in dry conditions

P6
Requirements for the heavy load bearing boards that may be used in dry conditions



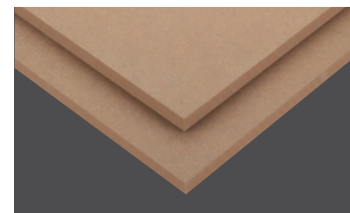
P3
Requirements for the non-load bearing boards that may be used in damp conditions

P5
Requirements for the load bearing boards that may be used in damp conditions

P7
Requirements for the heavy load bearing boards that may be used in damp conditions



What is **HDF?**



HDF (HIGH DENSITY FIBERBOARD)

HDF (High Density Fiberboard) is a wood material board made of wood fiber used in furniture and interior architecture applications.

- HDF products are produced in thicknesses from 2.2 mm to 50 mm in accordance with EN-DIN 622 standards and E1 emission class.
- They are very similar to MDF boards. HDF boards have a very homogeneous structure and closed surfaces.
- HDF is “high density fiberboard.”

Areas Of Usage

- HDF boards are used as carrier boards for the laminate floors.
- It is used on the industrial shelves and workbenches.
- It is used on the steps and docks.
- It is used as a door surface.
- It is used in any turning and engraving works

HDF Advantages

- They can be primed.
- A pattern may be printed on their surface.
- Surface coating can be applied.
- They can be polished.
- They have good bending and diagonal tensile strength.
- They are superior to normal MDF product ranges in terms of swelling effect.

HDF boards are mostly used on laminate flooring and American door surfaces.

NOTE: It can be produced in all sizes produced in MDF.

MDF – PARTICLE BOARD – HDF

Details That Make A Difference In The Board

- Fr (Fire Resistance) Certificate - Fire Resistance Class
- Mr (Moisture Resistance) Certificate - Moisture Resistance Class
- Tse, E1, E0, Carb2 / Epa, Ce, Fsc®, F4 Star, Reach, Hygienic Certificates

E0 - E1 - E2 - CARB/EPA Certificates

These are the documents related to free formaldehyde emitted by glue based chemicals used in manufacture of the wooden based products.

Fiberboard Density Ranges

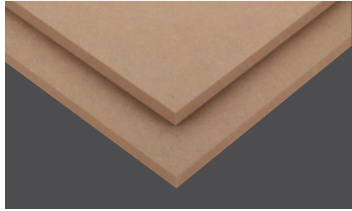
HDF	MDF	LIGHT MDF	ULTRALIGHT MDF
≥ 800 kg/m ³	≥ 650 - < 800 kg/m ³	≥ 550 - < 650 kg/m ³	≥ 450 - < 550 kg/m ³
(HDF; High Density Fiberboard)	(MDF; Medium Density Fiberboard)	(L-MDF; Light Medium Density Fiberboard)	(UL-MDF; Ultra Light Medium Density Fiberboard)

Particle Board Density Ranges (Based on 16-18 mm thickness range)

P1		P2	P3(MR)	FR	SF
EKSTRA	EKO	≥ 620 - ≤ 650 kg/m ³	≥ 640 - ≤ 690 kg/m ³	≥ 640 - ≤ 690 kg/m ³	≥ 605 - ≤ 670 kg/m ³
≥ 550 - ≤ 580 kg/m ³	≥ 580 - ≤ 610 kg/m ³				
P1 Ekstra: Ultra Light Particle Board P1 Eko: Light Particle Board		P2; Standard Particle Board	P3; Moisture Resistant Particle Board	FR: Fire Resistant Particle Board	SF; Super Fine
TYPE 1: Requirements for the general purpose boards that may be used in dry conditions		TYPE2: Requirements for the boards that may be used for any interior hardware applications in dry conditions	TYPE 3: Requirements for the non-load bearing boards that may be used in damp conditions		



RAW
BOARD



MEDEPAN

Raw MDF with high surface layer density is used in high quality furniture and interior design applications. It supports edge profiling and surface treatments. It also contains low formaldehyde. It is suitable for profile application, and has high edge stability, good density profile, high bending resistance, strong body structure, balanced fiber distribution, high surface quality, high static loading capacity and low swelling value.

Areas Of Usage

Furniture, interior decoration and 3D front panels.

- It can be faced on the surface by melamine film and laminate.
- Coating and foil can be adhered.
- Lacquer paint can be applied.

MEDEPAN S (MELAMINE)

Raw MDF with high surface layer density is used in high quality furniture and interior design applications.

Dimension Of The Produced Products

WIDTH (mm)	LENGTH (mm)	THICKNESS (mm)*
1830-2100	2800-3660	6-40

**Manufacture in particular dimensions in the specified ranges requires a particular order quantity. For details, please contact Sales Representatives.*

*SUITABLE FOR MELAMINE COATING OF THE SURFACE.

MEDEPAN PYS (MARKET)

Interior furniture body, lacquer painted furniture works, edge profile and surface milling model can be used in all works that are not deep.

Dimension Of The Produced Products

WIDTH (mm)	LENGTH (mm)	THICKNESS (mm)*
1220-2800	1830-4200	3-40

**Manufacture in particular dimensions in the specified ranges requires a particular order quantity. For details, please contact Sales Representatives.*

*SUITABLE FOR THE SURFACE MILLING PROCESS.

MEDEPAN L (LACQUER)

Raw MDF with high surface layer density is used in high quality furniture and interior design applications.

Dimension Of The Produced Products

WIDTH (mm)	LENGTH (mm)	THICKNESS (mm)*
1830-2440	1830-3660	2,6 - 3 - 5 - 6 (zımparalı) 2,6 - 6 (zımparasız)

**Manufacture in particular dimensions in the specified ranges requires a particular order quantity. For details, please contact Sales Representatives.*

MEDEPAN F (FREZE)

The boards (FM) with one surface faced by laminate board is generally suitable for PVC cover printing works in the market and the boards (F) with both raw sides are suitable for all milling, deep profile opening, CNC surface treatments and lacquer paint applications. Unlike PYS products, the boards have the high overall density and surface density and their fiber structure have a smooth quality.

WIDTH (mm)	LENGTH (mm)	THICKNESS (mm)*
1220-2800	1830-4200	6-38

**Manufacture in particular dimensions in the specified ranges requires a particular order quantity. For details, please contact Sales Representatives.*

*SUITABLE FOR THE SURFACE MILLING PROCESS.



TEKNOPAN - YONGAPAN

YONGAPAN - TEKNOPAN raw particle board consists of durable middle layer and smooth surfaces. Its smooth surface, light wood effect, high surface durability, low dust content, high stability, very good lamination characteristics provide clean and particle-free operation.

Areas Of Usage

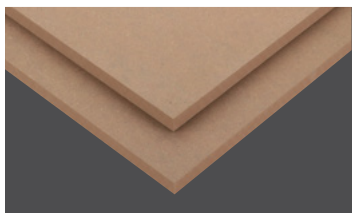
Furniture, interior decoration, laminate coating, foil, kitchen furniture, office furniture.

- Melamine film and laminate can be faced on the surface.
- Coating and foil can be adhered.

Dimension Of The Produced Products

WIDTH (mm)	LENGTH (mm)	THICKNESS (mm)*
1830-2200	2200-5620	6-40

**Manufacture in particular dimensions in the specified ranges requires a particular order quantity. For details, please contact Sales Representatives.*



MAXIPAN - NEOPAN - SUPERPAN (LOW DENSITY MDF)

MAXIPAN, SUPERPAN AND NEOPAN, which are low density plates made of MDF, meet different use needs.

Areas Of Usage

It is used for furniture, profile enclosed front panels, high quality shelf panels, wall panels, decorative panels, laminate coatings, foils, kitchen furniture, office furniture, etc.

DENSITY ORDER: MDF > MAXIPAN > NEOPAN > SUPERPAN

Dimension Of The Produced Products

MAXIPAN

WIDTH (mm)	LENGTH (mm)	THICKNESS (mm)*
1220-2800	2100-3660	5-38

**Manufacture in particular dimensions in the specified ranges requires a particular order quantity. For details, please contact Sales Representatives.*

NEOPAN

WIDTH (mm)	LENGTH (mm)	THICKNESS (mm)*
1830-2800	2100-3660	11,5-18

**Manufacture in particular dimensions in the specified ranges requires a particular order quantity. For details, please contact Sales Representatives.*

SUPERPAN

WIDTH (mm)	LENGTH (mm)	THICKNESS (mm)*
1830-2440	2440-3660	14-30

**Manufacture in particular dimensions in the specified ranges requires a particular order quantity. For details, please contact Sales Representatives.*



EKOPAN - EXTRAPAN (LOW DENSITY PARTICLE BOARD)

Low density particle board.

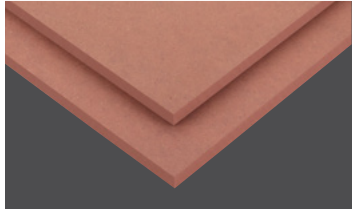
Areas Of Usage

It is suitable for complementary furniture construction, stand construction, vertical use. It is not recommended to use it for the grooving and door applications.

Dimension Of The Produced Products

WIDTH (mm)	LENGTH (mm)	THICKNESS (mm)*
1830-2100	2200-5600	6-40

**Manufacture in particular dimensions in the specified ranges requires a particular order quantity. For details, please contact Sales Representatives.*



MEDEPAN FR (FIRE RESIST MDF)

MEDEPAN FR is an MDF board with red core layer and low flash point. It is suitable for melamine coating and can be used as main body for fire resistant laminate. Low flash point, smooth and homogeneous surface are suitable for all kinds of decorative coating.

Areas Of Usage

It is used for furniture and interior decoration, wall and ceiling cladding, partition walls, doors, floorings, exhibition stands, hotel decoration, offices, public institutions (Library, school, etc.), hospital furniture and cinema furniture.

THE MATERIAL, WHICH HAS A FIRE RETARDANT PROPERTY, IS PAINTED BY A RED PIGMENT TO SEPARATE IT FROM THE OTHERS.

If desired, it can be produced without pigment.

Dimension Of The Produced Products

WIDTH (mm)	LENGTH (mm)	THICKNESS (mm)*
1220-2800	2070-3660	6-18

**Manufacture in particular dimensions in the specified ranges requires a particular order quantity. For details, please contact Sales Representatives.*



TEKNOPAN FR - YONGAPAN FR (FIRE RESIST PARTICLE BOARD)

TEKNOPAN FR – YONGAPAN FR is a particle board with red core layer and low flash point. It is suitable for melamine coating and can be used as main body for fire resistant laminate. Low flash point, smooth and homogeneous surface are suitable for all kinds of decorative coating.

Areas Of Usage

It is used for furniture and interior decoration, wall and ceiling cladding, partition walls, doors, floorings, exhibition stands, hotel decoration, offices, public institutions (Library, school, etc.), hospital furniture and cinema furniture.

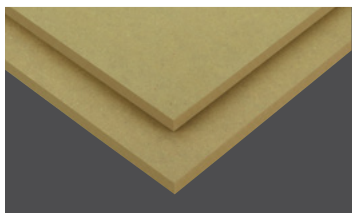
THE MATERIAL, WHICH HAS A FIRE RETARDANT PROPERTY, IS PAINTED BY A RED PIGMENT TO SEPARATE IT FROM THE OTHERS.

If desired, it can be produced without pigment.

Dimension Of The Produced Products

WIDTH (mm)	LENGTH (mm)	THICKNESS (mm)*
1830-2100	2200-5600	6-40

**Manufacture in particular dimensions in the specified ranges requires a particular order quantity. For details, please contact Sales Representatives.*



MEDEPAN MR (MOISTURE RESIST MDF)

MEDEPAN MR is an MDF board highly resistant to the environments exposed to moisture and water droplets in interior decoration. It is smooth and homogeneous. All kinds of decorative surface coating can be applied. It has high mechanical strength. It is especially recommended for applications without main structures in humid environments with low swelling values.

Areas Of Usage

It is suitable for use in humid environments such as kitchen worktops, bathroom furniture, window sills, flooring floors, underfloor slabs, camping vehicle floors, etc.

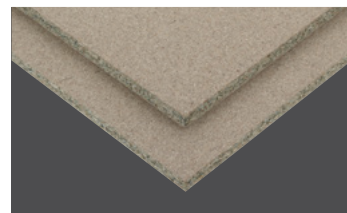
THE MATERIAL, WHICH HAS A MOISTURE RESISTANT FEATURE, IS PAINTED WITH A GREEN PIGMENT TO SEPARATE IT FROM THE OTHERS.

If desired, it can be produced without pigment.

Dimension Of The Produced Products

WIDTH (mm)	LENGTH (mm)	THICKNESS (mm)*
1220-2800	2070-3660	10-30

**Manufacture in particular dimensions in the specified ranges requires a particular order quantity. For details, please contact Sales Representatives.*



TEKNOPAN MR - YONGAPAN MR (MOISTURE RESIST PARTICLE BOARD)

TEKNOPAN MR – YONGAPAN MR is a particle board highly resistant to the environments exposed to moisture and water droplets in interior decoration. It is smooth and homogeneous. All kinds of decorative surface coating can be applied. It has high mechanical strength. It is especially recommended for applications without main structures in humid environments with low swelling values.

Areas Of Usage

It is suitable for use in humid environments such as kitchen worktops, bathroom furniture, window sills, flooring floors, underfloor slabs, camping vehicle floors, etc.

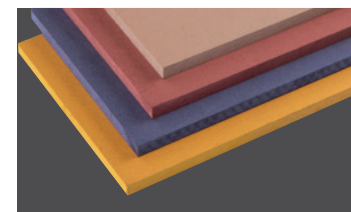
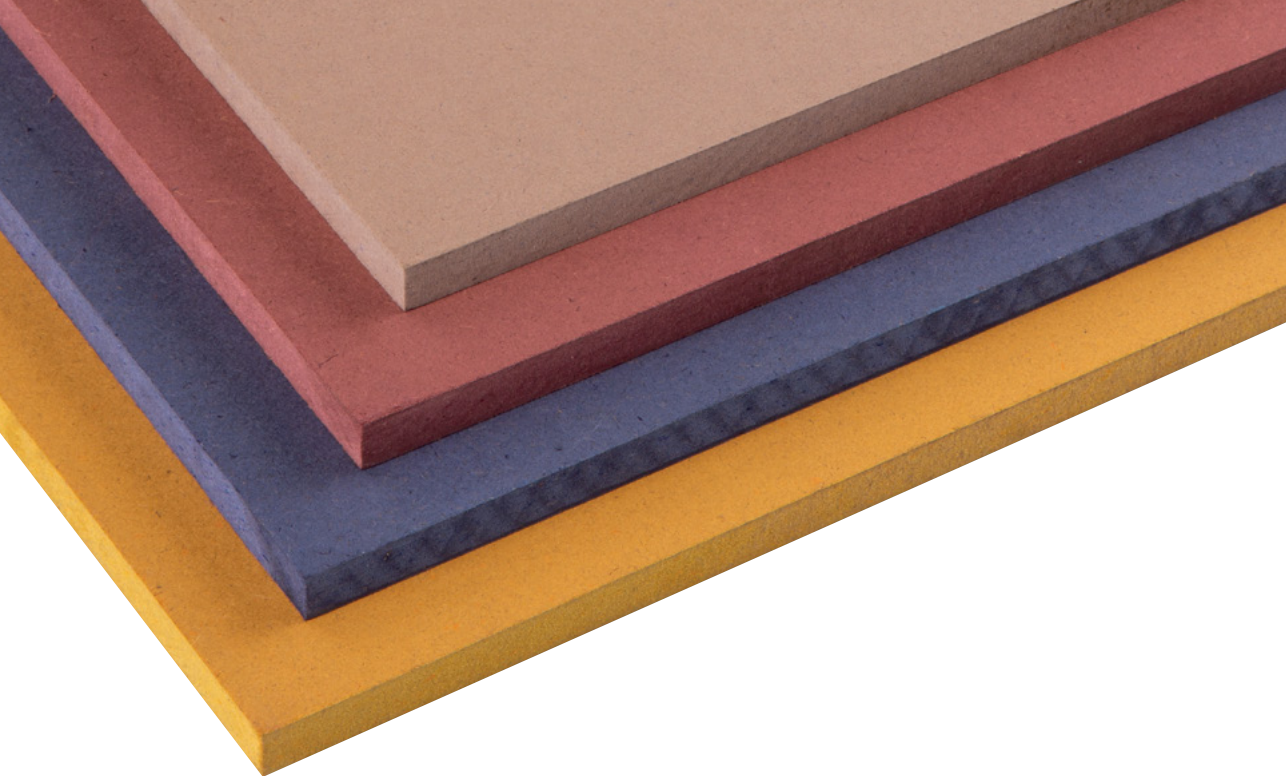
THE MATERIAL, WHICH HAS A MOISTURE RESISTANT FEATURE, IS PAINTED WITH A GREEN PIGMENT TO SEPARATE IT FROM THE OTHERS.

If desired, it can be produced without pigment.

Dimension Of The Produced Products

WIDTH (mm)	LENGTH (mm)	THICKNESS (mm)*
1830-2100	2200-5600	6-40

**Manufacture in particular dimensions in the specified ranges requires a particular order quantity. For details, please contact Sales Representatives.*



COLORED PANEL **COLORPAN**

COLORPAN

COLORPAN self-colored MDF products are used in decoration, furniture, wall flooring, kitchen, door, bathroom, decorative panels, exhibition stands. Unlike faced, polished or lacquered surfaces, it has a natural looking surface texture. It is very easy to repair. Any type of finish can be applied. It is available in black, blue, red, yellow and beige. It can be applied on matt and glossy polish.

Areas Of Usage

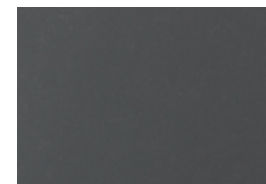
It is used in decoration, furniture, walls & floors, kitchens, doors, bathrooms, decorative panels and exhibition stands.

Dimension Of The Produced Products

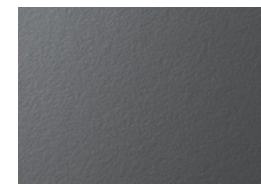
WIDTH (mm)	LENGTH (mm)	THICKNESS (mm)*
2100	2800	8-25

**Manufacture in particular dimensions in the specified ranges requires a particular order quantity. For details, please contact Sales Representatives.*

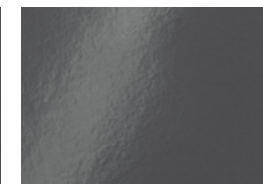
SUR FACES



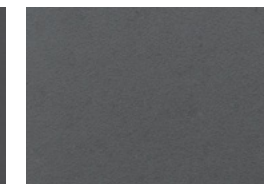
PS10 STRAIGHT



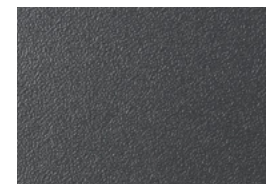
PS11 NATURAL



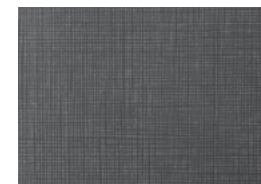
PS12 LIGHT



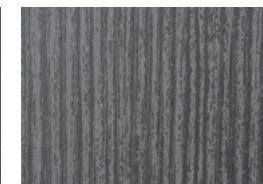
PS13 SUPER MAT



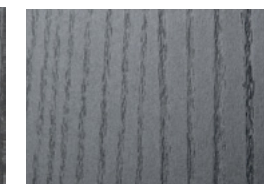
PS14 BUTE



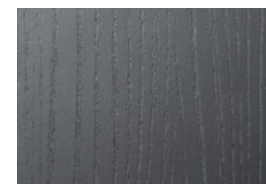
PS16 FABRIC



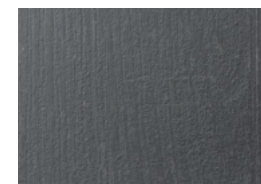
PS19 FREZE



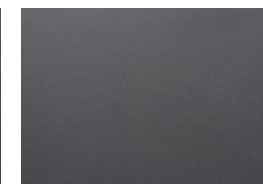
PS22 WOOD



PS27 REGISTER



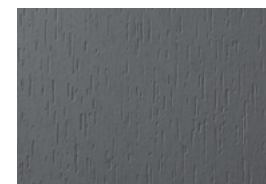
PS28 EMBOSS



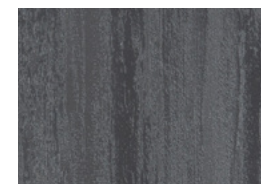
PS30 PAINT



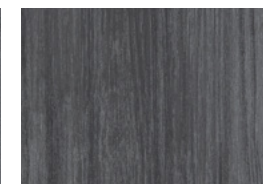
PS33 STONE



PS37 VENEER



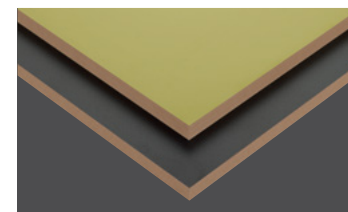
PS44 TRAVERTEN (NEW)



PS45 ROVERE (NEW)



MELAMINE FACED BOARD



MEDELAM

MEDELAM melamine faced boards are obtained by applying melamine on a MDF. These panels with a wide range of patterns and material combinations offer various application options for furniture and interior decoration.

Areas Of Usage

It is used for furniture, profile enclosed front panels, high quality shelf panels, wall panels, decorative panels, laminate coatings, foils, kitchen furniture, office furniture, etc.

Dimension Of The Produced Products

WIDTH (mm)	LENGTH (mm)	THICKNESS (mm)*
1830-2100	2100-3660	6-40

**Manufacture in particular dimensions in the specified ranges requires a particular order quantity. For details, please contact Sales Representatives.*



TEKNOLAM - YONGALAM

YONGALAM - TEKNOLAM melamine faced boards are obtained by applying melamine on a particle board. These panels with a wide range of patterns and material combinations offer various application options for furniture and interior decoration.

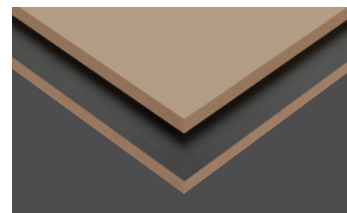
Areas Of Usage

It is used for furniture, profile enclosed front panels, high quality shelf panels, wall panels, decorative panels, laminate coatings, foils, kitchen furniture, office furniture, etc.

Dimension Of The Produced Products

WIDTH (mm)	LENGTH (mm)	THICKNESS (mm)*
1830-2200	1350-5600	6-38

**Manufacture in particular dimensions in the specified ranges requires a particular order quantity. For details, please contact Sales Representatives.*



MAXILAM - NEOLAM - SUPERLAM (LOW DENSITY MDF)

Maxilam, Superlam and Neolam, which are low density types made of MDF board, meet the different use requirements.

Areas Of Usage

It is used for furniture, profile enclosed front panels, high quality shelf panels, wall panels, decorative panels, laminate coatings, foils, kitchen furniture, office furniture, etc.

DENSITY ORDER: MDF > MAXILAM > NEOLAM > SUPERLAM

Dimension Of The Produced Products

MAXILAM

WIDTH (mm)	LENGTH (mm)	THICKNESS (mm)*
1830-2100	2440-3660	15,5-18

**Manufacture in particular dimensions in the specified ranges requires a particular order quantity. For details, please contact Sales Representatives.*

NEOLAM

WIDTH (mm)	LENGTH (mm)	THICKNESS (mm)*
1830-2100	2800-3660	14-18

**Manufacture in particular dimensions in the specified ranges requires a particular order quantity. For details, please contact Sales Representatives.*

SUPERLAM

WIDTH (mm)	LENGTH (mm)	THICKNESS (mm)*
1830-2100	2440-3660	14-18

**Manufacture in particular dimensions in the specified ranges requires a particular order quantity. For details, please contact Sales Representatives.*



EKOLAM (LOW DENSITY PARTICLE BOARD)

Melamine faced low density particle board

Areas Of Usage

It is suitable for complementary furniture construction, stand construction, vertical use. It is not recommended to use it for the grooving and door applications.

Dimension Of The Produced Products

WIDTH (mm)	LENGTH (mm)	THICKNESS (mm)*
1830-2100	2440-5600	6-38

**Manufacture in particular dimensions in the specified ranges requires a particular order quantity. For details, please contact Sales Representatives.*



EXTRALAM (LOW DENSITY PARTICLE BOARD)

Melamine faced low density particle board

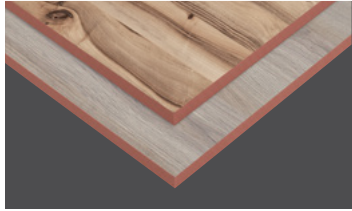
Areas Of Usage

It is suitable for complementary furniture construction, stand construction, vertical use. It is not recommended to use it for the grooving and door applications.

Dimension Of The Produced Products

WIDTH (mm)	LENGTH (mm)	THICKNESS (mm)*
1830-2100	2440-5600	6-38

**Manufacture in particular dimensions in the specified ranges requires a particular order quantity. For details, please contact Sales Representatives.*



MEDELAM FR (FIRE RESIST MDF)

MEDELAM FR is a melamine faced MDF board with red core layer and low flash point. It is suitable for melamine coating and can be used as main body for fire resistant laminate. Low flash point, smooth and homogeneous surface are suitable for all kinds of decorative coating.

Areas Of Usage

It is used for furniture and interior decoration, wall and ceiling cladding, partition walls, doors, floorings, exhibition stands, hotel decoration, offices, public institutions (library, school, etc.), hospital furniture and cinema furniture.

THE MATERIAL, WHICH HAS A FIRE RETARDANT PROPERTY, IS PAINTED BY A RED PIGMENT TO SEPARATE IT FROM THE OTHERS.

If desired, it can be produced without pigment.

Dimension Of The Produced Products

WIDTH (mm)	LENGTH (mm)	THICKNESS (mm)*
1830-2100	2750-3660	8-18

**Manufacture in particular dimensions in the specified ranges requires a particular order quantity. For details, please contact Sales Representatives.*



TEKNOLAM FR - YONGALAM FR (FIRE RESIST PARTICLE BOARD)

TEKNOLAM FR – YONGALAM FR is a melamine faced particle board with red core layer and low flash point. It is suitable for melamine coating and can be used as main body for fire resistant laminate. Low flash point, smooth and homogeneous surface are suitable for all kinds of decorative coating.

Areas Of Usage

It is used for furniture and interior decoration, wall and ceiling cladding, partition walls, doors, floorings, exhibition stands, hotel decoration, offices, public institutions (library, school, etc.), hospital furniture and cinema furniture.

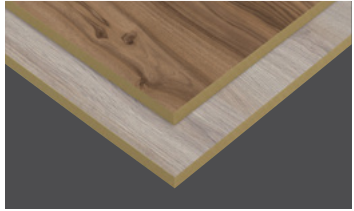
THE MATERIAL, WHICH HAS A FIRE RETARDANT PROPERTY, IS PAINTED BY A RED PIGMENT TO SEPARATE IT FROM THE OTHERS.

If desired, it can be produced without pigment.

Dimension Of The Produced Products

WIDTH (mm)	LENGTH (mm)	THICKNESS (mm)*
1830-2100	2440-5600	6-38

**Manufacture in particular dimensions in the specified ranges requires a particular order quantity. For details, please contact Sales Representatives.*



MEDELAM MR (MOISTURE RESIST MDF)

MEDEPAN MR is a melamine faced MDF board highly resistant to the environments exposed to moisture and water droplets in interior decoration. It is smooth and homogeneous. All kinds of decorative surface coating can be applied. It has high mechanical strength. It is especially recommended for applications without main structures in humid environments with low swelling values.

Areas Of Usage

It is suitable for use in humid environments such as kitchen worktops, bathroom furniture, window sills, flooring floors, underfloor slabs, camping vehicle floors, etc.

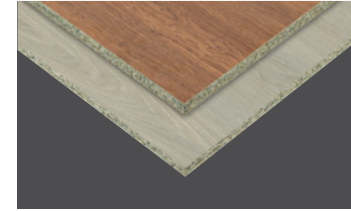
THE MATERIAL, WHICH HAS A MOISTURE RESISTANT FEATURE, IS PAINTED WITH A GREEN PIGMENT TO SEPARATE IT FROM THE OTHERS.

If desired, it can be produced without pigment.

Dimension Of The Produced Products

WIDTH (mm)	LENGTH (mm)	THICKNESS (mm)*
1830-2100	2440-3660	16-22

**Manufacture in particular dimensions in the specified ranges requires a particular order quantity. For details, please contact Sales Representatives.*



TEKNOLAM MR - YONGALAM MR (MOISTURE RESIST PARTICLE BOARD)

TEKNOLAM MR – YONGALAM MR is a melamine faced particle board highly resistant to the environments exposed to moisture and water droplets in interior decoration. It is smooth and homogeneous. All kinds of decorative surface coating can be applied. It has high mechanical strength. It is especially recommended for applications without main structures in humid environments with low swelling values.

Areas Of Usage

It is suitable for use in humid environments such as kitchen worktops, bathroom furniture, window sills, flooring floors, underfloor slabs, camping vehicle floors, etc.

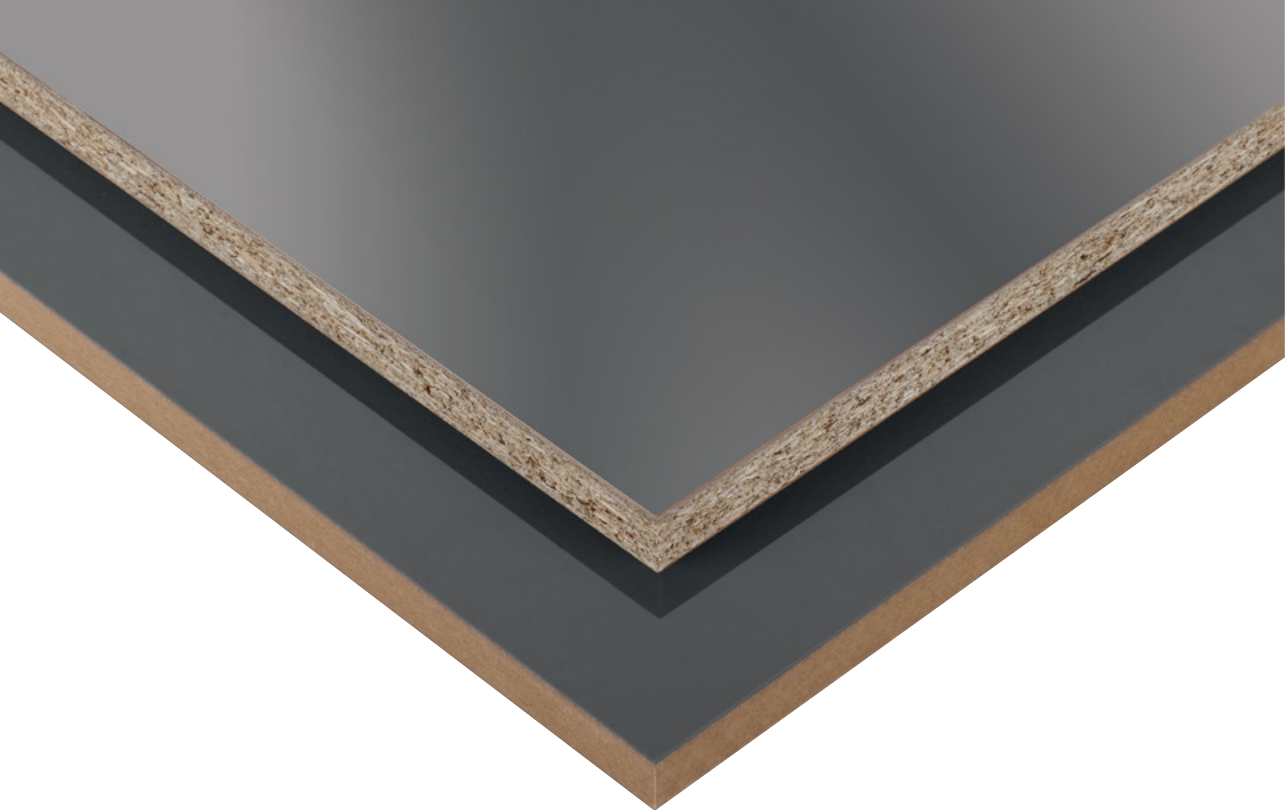
THE MATERIAL, WHICH HAS A MOISTURE RESISTANT FEATURE, IS PAINTED WITH A GREEN PIGMENT TO SEPARATE IT FROM THE OTHERS.

If desired, it can be produced without pigment.

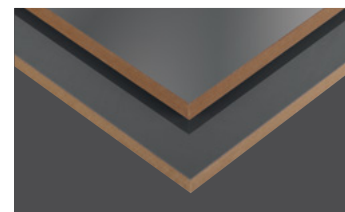
Dimension Of The Produced Products

WIDTH (mm)	LENGTH (mm)	THICKNESS (mm)*
1830-2100	2440-5600	6-38

**Manufacture in particular dimensions in the specified ranges requires a particular order quantity. For details, please contact Sales Representatives.*



HIGH GLOSS
 PANEL
HIGHGLOSS



HIGHGLOSS

Our melamine faced boards, which take their brightness from the panel, meet any different decoration requirements.

Areas Of Usage

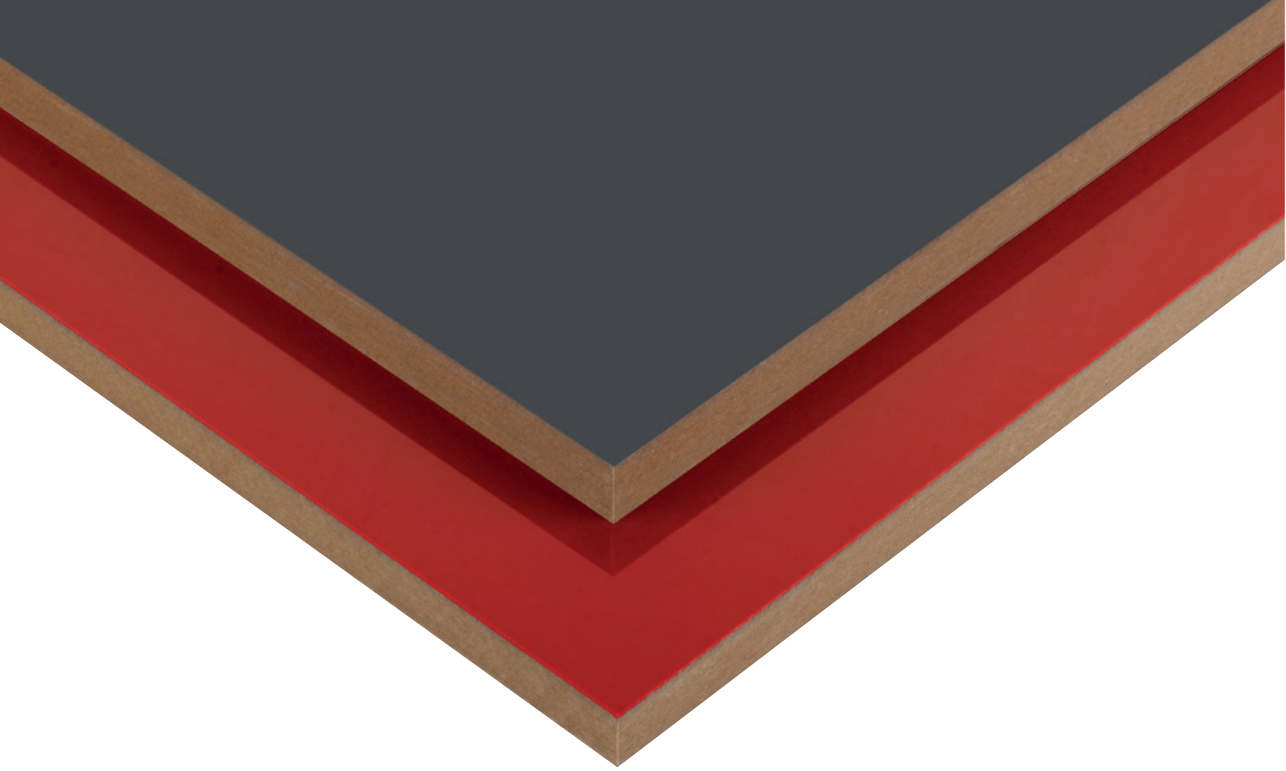
It enables the creation of new combinations in kitchen, bathroom, furniture and home decoration.

WARNING! HGS products with glossy and flat surfaces have lower scratch resistance compared to other surfaces.

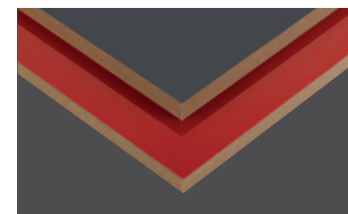
Dimension Of The Produced Products

WIDTH (mm)	LENGTH (mm)	THICKNESS (mm)*
1830-2100	2440-3660	8-40

**Manufacture in particular dimensions in the specified ranges requires a particular order quantity. For details, please contact Sales Representatives.*



PVC/PET
FACED PANEL
EVOGLOSS



EVOGLOSS

EVOGLOSS panels are obtained by coating the surface of high quality MDF panels with pvc and/or pet foils having more than a hundred glossy and matte decor options. Evogloss panel options offer you the opportunity to create unique, modern and aesthetic living spaces.

Areas Of Usage

It provides new combinations in modern kitchen, bathroom, home design, furniture and decoration.
*Suitable for indoor usage.

Panel Advantages

Modern glossy and matte patterns leading the trends, adding deepness to your living spaces with high gloss, stylish looking and mirror-effect glossy surfaces, bringing naturalness to your living spaces with matte surfaces, preserving the first day appearance for many years due to high resistance to fading characteristics, being easy to clean as well as having no loss of brightness on the surfaces due to cleaning.



HIGH GLOSS (GLOSSY)



MIRROR EFFECT (GLOSSY)



SOFT TOUCH (MATTE)



RESISTANT TO STAIN



RESISTANT TO SCRATCHING



EASY CLEAN

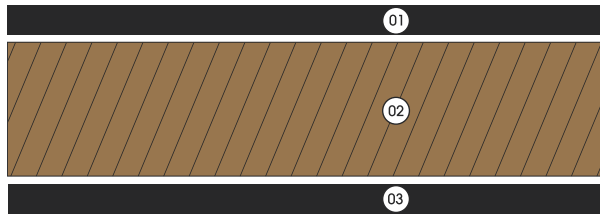


RESISTANT TO CRACKING



LOW MICRO-SCRATCHES

Panel Features



- 01 **PET - PVC COATING**
High grade, scratch and fade-resistant decorative coating
- 02 **MDF**
Strong board with high pressure resistance that fits for E1 norms
- 03 **IMPREGNATED DECORATIVE PAPER OR PVC LINING**

BOARD TYPE	MDF
PANEL THICKNESS*	8-18 mm
PANEL SIZES	1220x2800 mm
FOLIO THICKNESS	0,2 mm - 0,25 mm - 0,3 mm - 0,4 mm
FOLIO TYPE	PVC or PET

*Manufacture in particular dimensions in the specified ranges requires a particular order quantity.
For details, please contact Sales Representatives.

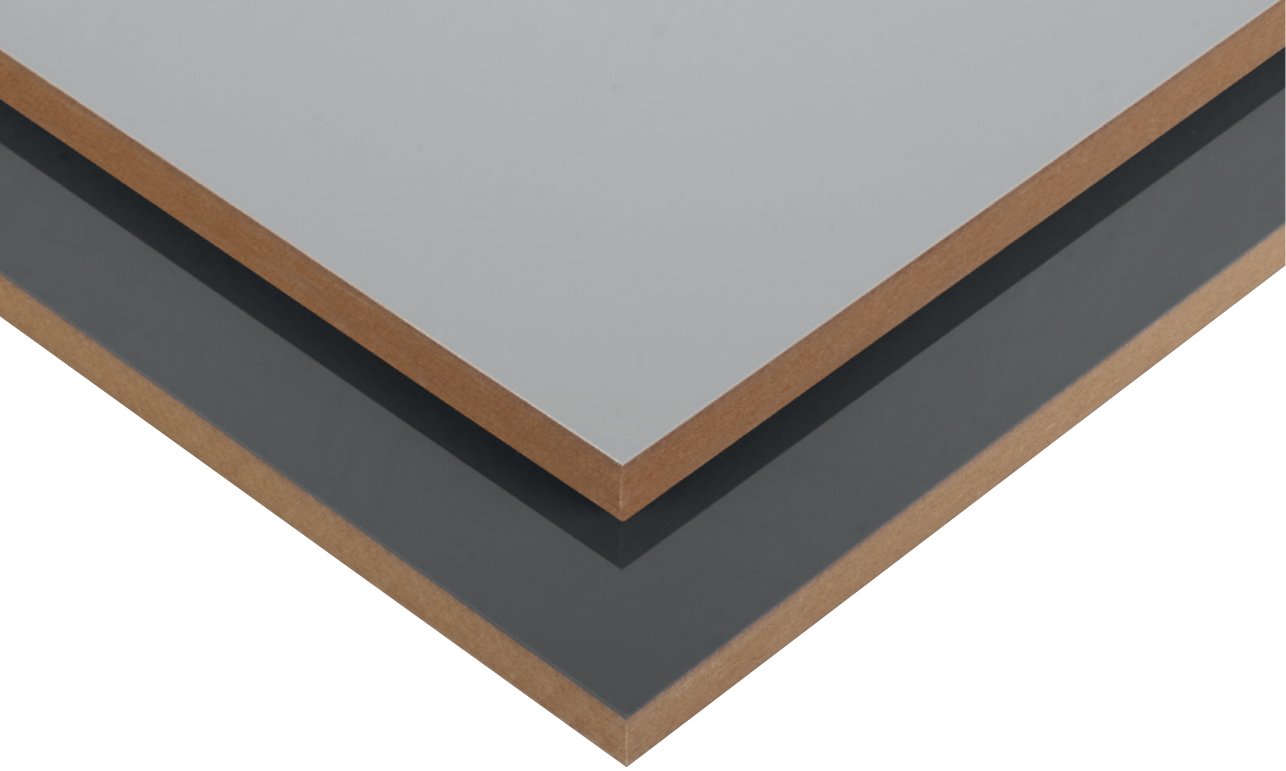
Evogloss Technical Features

CONTROL CRITERIA	TEST METHOD	UNIT OR FEATURE	THICKNESS RANGE (RATED)	
		mm	t<15	15≤t≤20
THICKNESS COMPARED TO RATED VALUES THICKNESS T WITHIN THE BOARD	EN 14323	mm	+0,5/-0,3 t ^{max} - t ^{min} ≤ 0,6	
LENGTH AND WIDTH	EN 14323	mm	± 5	
FLATNESS	EN 14323	mm/m	-	≤2
DENSITY	EN 323	%	±7	
SURFACE DEFFECTS	EN 14323	m²	4 pieces in 1 m² between 0-25 mm 3 pieces in 1 m² between 25 - 6mm 2 pieces in 1 m² between 6-10 mm 1 piece in 1 m² between 10-15 mm	
SURFACE RESISTANCE TO MICRO-SCRATCH	CEN/TS 16611 (Method A)	% change	≤ 10	
RESISTANCE TO SCRATCHING	EN 15186 (Method B)	N	≥ 0,5	
SURFACE RESISTANCE TO DRY TEMPERATURE (70°)	EN 12722	Rating	5	
LIGHT FASTNESS (XENON ARC LAMP)	EN 15187	Scale	Grey scale ≥4/5 Blue wool scale >6	
MIRROR EFFECT	TSE K 479	Observation	min. 6	
GLOSS (60°)	EN 13722	Gloss Unit (GU)	70	
COLOR DIFFERENCE (BY REFERENCE SAMPLE)	EN 13721	ΔE (L, a, b)	<1	
RESISTANCE TO COLD LIQUIDS	EN 12720+A1	Class	min. 3 (16 h)	
SURFACE RESISTANCE TO WET TEMPERATURE(70 °C)	EN 12721	Rating	Pet	5
			Pvc&Pvc+Pet	4
FORMALDEHYDE RELEASE	EN ISO 12460-3	mg/m³ air	E0 < 1,75, E1 ≤ 3,5 E2 ; 3,5 < release ≤ 8	

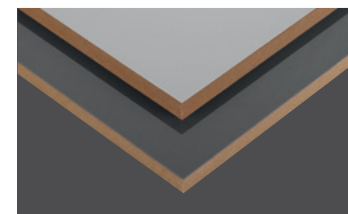
It is prepared with reference to TSEK 517 Standard.
Some criteria and tolerances required for competence are specific to Kastamonu Entegre, and the right to evaluate and change is reserved to those authorized by Kastamonu Entegre.

MATERIAL	PVC	PET
UV-RESISTANCE	NORMAL	GOOD
SURFACE QUALITY	NORMAL	VERY GOOD
RESISTANCE TO SCRATCHING	NORMAL	NORMAL
ENVIRONMENT FRIENDLY	FLOW PROMOTERS, STABILIZATORS	NO ADDITIVES
DEPTH OF COLORS	LIGHT	DARK
CLEANNESS OF PATTERNS	NORMAL	CLEAN PATTERNS

The front surface of the panels is covered with Evogloss PVC or PET and the back side is covered with white impregnated paper or lining.



ACRYLIC
FACED PANEL
ACRYLIC PANEL
NON SCRATCH



ACRYLIC PANEL NON SCRATCH

Acrylic panels are produced by coating the front surface of the MDF that has quality features above the standards with the AM 1800TopX scratch-proof materials, which are the highest quality products of the world's best acrylic producer senosan, and coating the back surface with the same color of durable linings.

Areas Of Usage

It is used in office, kitchen, bathroom and rail cabinets.

*Suitable for indoor usage.

Panel Advantages

Along with their deep mirror effect and elegant and modern appearance, highly glossy Acrylic panel is a product which you can use safely for long years thanks to high-resistant to scratching, effective resistance to UV beams and chemicals.



HIGH GLOSS



MIRROR EFFECT



RESISTANT TO FADING



RESISTANT TO STAIN



SURFACE SMOOTHNESS



RESISTANT TO SCRATCHING



EASY CLEAN

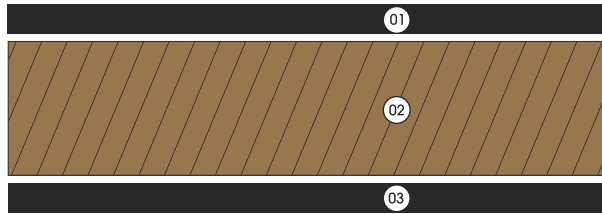


RESISTANT TO CRACKING



LOW MICRO-SCRATCH

Acrylic Panel Non Scratch Panel Features



- 01 ACRYLIC COATING**
High-grade, scratch and fade-resistant decorative sheet
- 02 MDF**
Strong board with high pressure resistance that fits for E1 norms
- 03 UNDERCOAT**
Impact-resistant backside coating produced in the same color as the acrylic front side or in a different color upon request

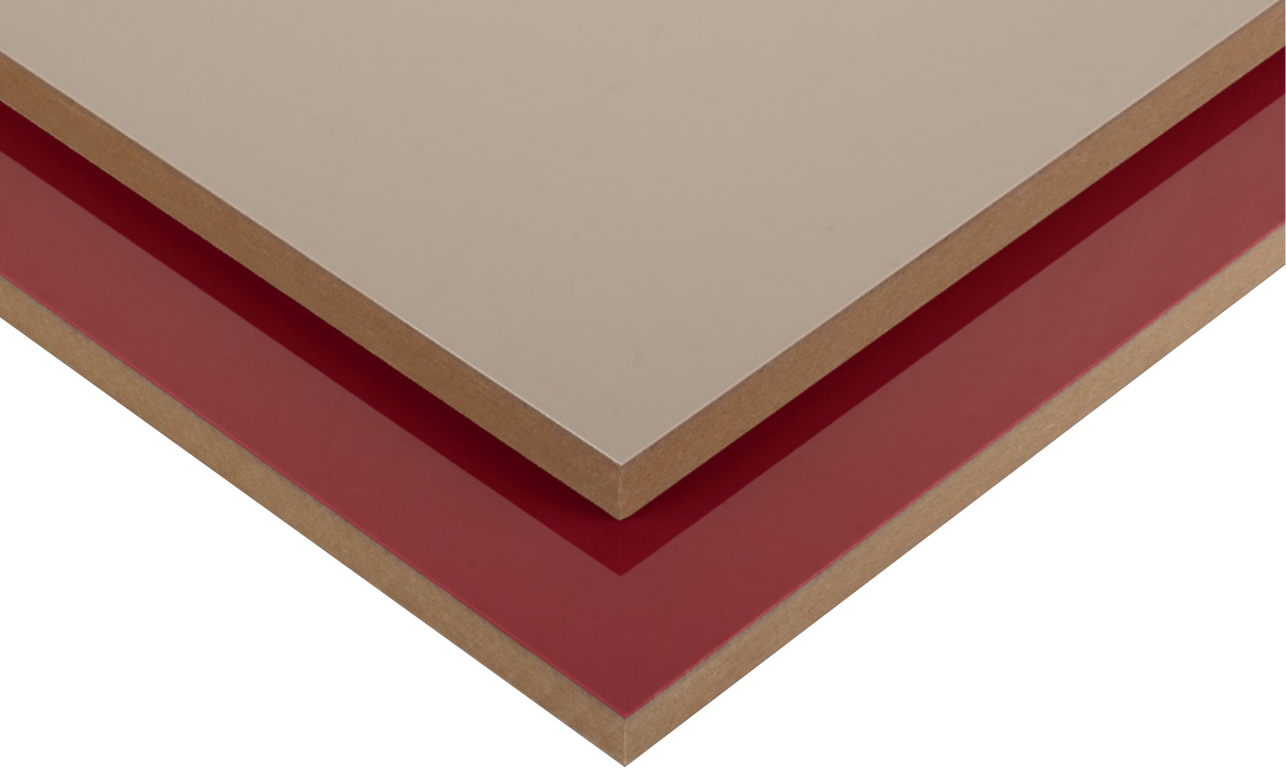
BOARD TYPE	MDF
PANEL THICKNESS*	8 -18 mm
PANEL SIZES	1220x2800 mm

*Manufacture in particular dimensions in the specified ranges requires a particular order quantity. For details, please contact Sales Representatives.

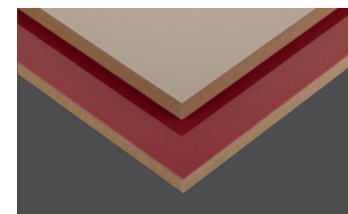
Acrylic Panel Non Scratch Technical Features

CONTROL CRITERIA	TEST STANDARD	UNIT OR FEATURE	THICKNESS RANGE (RATED)	
			t<15	15≤t≤20
THICKNESS COMPARED TO RATED VALUE	EN 14323	mm	+0,5/-0,3 $t^{max} - t^{min} \leq 0,6$	
LENGTH AND WIDTH	EN 14323	mm	± 5	
FLATNESS	EN 14323	mm/m	-	≤2 (only for balanced surfaces)
SURFACE DEFFECTS	EN 14323	m ²	4 pieces in 1 m ² between 0-2,5 mm 3 pieces in 1 m ² between 2,5-6 mm 2 pieces in 1 m ² between 6-10 mm 1 piece in 1 m ² between 10-15 mm	
SURFACE RESISTANCE TO MICRO-SCRATCH	CEN/TS 16611 (Method A)	% change	≤ 10	
RESISTANCE TO SCRATCHING	EN 15186 (Method B)	N	≥ 1	
SURFACE RESISTANCE TO DRY TEMPERATURE (70°)	EN 12722	Rating	5	
LIGHT FASTNESS (XSENON ARC LAMP)	EN 15187	Scale	Grey scale ≥ 4/5 Blue wool scale > 6	
MIRROR EFFECT	TSE K 479	Observation	min. 6	
GLOSS (60°)	EN 13722	Gloss Unit (GU)	70	
COLOUR DIFFERENCE (BY REFERANCE SAMPLE)	EN 13721	ΔE (L, a, b)	< 1	
RESISTANCE TO COLD LIQUIDS (RESISTANCE TO CHEMICALS)	EN 12720+A1	Rating	min. 3 (16 h)	
SURFACE RESISTANCE TO WET TEMPERATURE	EN 12721	Rating	5	
FORMALDEHYDE RELEASE	EN ISO 12460-3	mg/m ³ air	E0 < 1,75 E1 ≤ 3,5 E2 ; 3,5 < release ≤ 8	

It is prepared with reference to TSEK 517 Standard. Some criteria and tolerances required for competence are specific to Kastamonu Entegre, and the right to evaluate and change is reserved to those authorized by Kastamonu Entegre.



ACRYLIC
FACED PANEL
ACRYLIC PANEL
INDUSTRIAL



ACRYLIC PANEL INDUSTRIAL

Industrial acrylic panels are produced by coating the front surface of the mdf having quality features above standards with acrylic and coating the back surface with the same color of durable linings.

* The back side of the products can also be covered with white melamine paper.

Areas Of Usage

It is used in office, kitchen, bathroom and rail cabinets.

*Suitable for indoor usage.

Panel Advantages

High gloss Industrial Acrylic panels are affordable and stylish products with modern appearance that can be used safely for many years without compromising the quality of the surface.



HIGH GLOSS



MIRROR EFFECT



RESISTANT TO FADING



RESISTANT TO STAIN



SURFACE SMOOTHNESS



EASY CLEAN

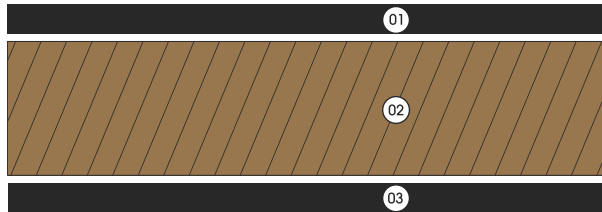


RESISTANT TO CRACKING



AFFORDABLE PRICE

Acrylic Panel Industrial Panel Features



- 01 ACRYLIC**
Affordable and shiny decorative sheet
- 02 MDF**
Strong board with high pressure resistance that fits for E1 norms
- 03 ASTAR**
Impact-resistant backside coating produced in the same color as the acrylic front side or in a different color upon request

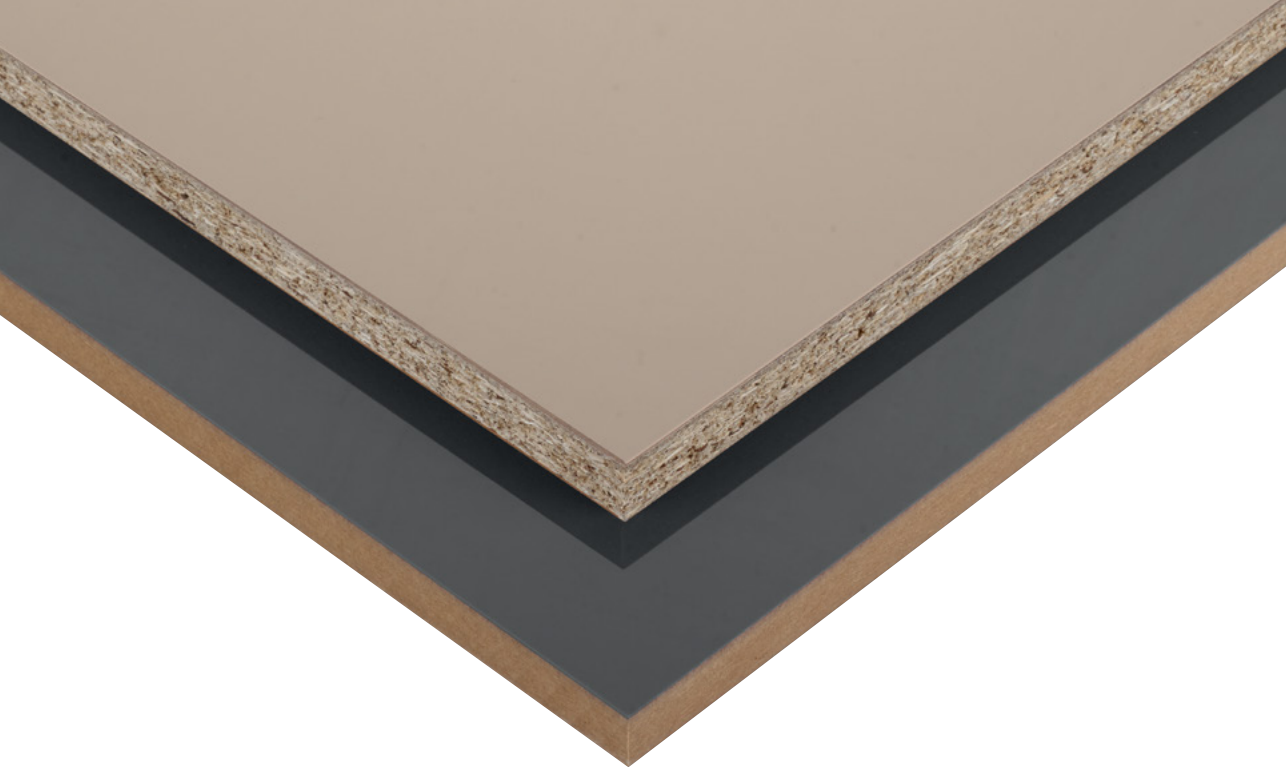
BOARD TYPE	MDF
PANEL THICKNESS*	8-18 mm
PANEL SIZES	1220x2800 mm

*Manufacture in particular dimensions in the specified ranges requires a particular order quantity. For details, please contact Sales Representatives.

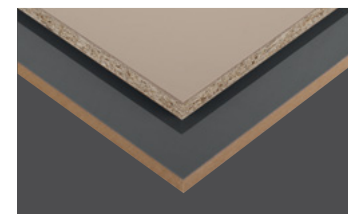
Acrylic Panel Industrial Technical Features

CONTROL CRITERIA	TEST STANDARD	UNIT OR FEATURE	KALINLIK ARALIĞI (ANMA)
			15≤t≤20
THICKNESS COMPARED TO RATED VALUES THICKNESS t RELATIVE TO NOMINAL VALUE	EN 14323	mm	+0,5/-0,3 t ^{max} - t ^{min} ≤ 0,6
LENGTH AND WIDTH	EN 14323	mm	± 5
FLATNESS	EN 14323	mm/m	≤2
SURFACE RESISTANCE TO MICRO-SCRATCH	KEAS Specific	% change	70 - 100
RESISTANCE TO SCRATHING	KEAS Specific	N	0,1 - 0,5
SURFACE RESISTANCE TO DRY TEMPERATURE (70°)	EN 12722	Rating	5
LIGHT FASTNESS (XENON ARC LAMP)	EN 15187	Scale	Grey scale ≥ 4/5 Blue wool scale > 6
MIRROR EFFECT	TSE K 479	Observation	min. 6
GLOSS (60°)	EN 13722	Gloss Unit (GU)	70
COLOR DIFFERENCE (BY REFERANCE SAMPLE)	EN 13721	ΔE (L, a, b)	<1
RESISTANCE TO COLD LIQUIDS	KEAS Specific	Rating	1 - 3 (16h)
SURFACE RESISTANCE TO WET TEMPERATURE (70 °C)	EN 12721	Rating	5
FORMALDEHYDE RELEASE	EN ISO 12460-3	mg/m ² air	E0 < 1,75 1,75 < E1 ≤ 3,5 3,5 < E2 ≤ 8

It is prepared with reference to TSEK 517 Standard. Some criteria and tolerances required for competence are specific to Kastamonu Entegre, and the right to evaluate and change is reserved to those authorized by Kastamonu Entegre.



UV ACRYLIC
LACQUERED GLOSS PANEL
GLOSSMAX PRO



GLOSSMAX PRO (UV ACRYLIC LACQUERED GLOSS PANEL)

GLOSSMAX PRO high gloss panel is a wooden panel with decorative glossy surface, which is produced by applying glue and UV acrylic lacquer onto the surface of melamine faced MDF or Particle Board through various industrial processes with advanced and unique technology. Higher surface quality and an impressive glossiness has been achieved with the minimized surface effects thanks to the Calender Coating Inert technology. After the chemical curing of the Polymeric glue (hot coating) process, which provides not only physical but also excellent chemical adhesion to the melamine faced surface, a superior surface is obtained by applying lacquer with respect to cutting quality and workability compared to other glossy surfaces.

Areas Of Usage

Kitchen cabinet, bathroom cabinet, bedroom, rail cabinet, teen room, office furniture, decoration and all modular products..

*Suitable for indoor usage.

Panel Advantages

MAXIMUM PERFORMANCE

High gloss and surface resistance...

With patented PUR glue application technology, it has a much better cutting and processing capability than its counterparts in the market. High protection is provided until the moment of delivery by the foil and protecting foam on the surface during the process.

MAXIMUM ADAPTATION

In the same colors and patterns with the Kastamonu Entegre Medelam&Teknolam...

One side of the decorative panel is glossy and the other side is covered with the same colored decor paper. It can be applied to all melamine faced decors. In this way, color integrity is ensured on the rear and front surfaces of the panels. The decorative panel attracts attention with its high level of natural surface appearance.

It is produced as MDF and Particle Board with rich color variety.

MAXIMUM SERVICE

Kastamonu Entegre's high production capacity and superior service quality...

MAXIMUM SIZE

2100x2800 mm in size, far from the limited work requirement...

The world's first 2100x2800 mm panel size provides users with an efficient optimization opportunity that offers low waste production solutions.



HIGH GLOSS



SUPERIOR SURFACE QUALITY



HIGH CRACKING RESISTANCE



RESISTANCE TO CHEMICALS AND STAIN



HIGH SCRATCHING RESISTANCE

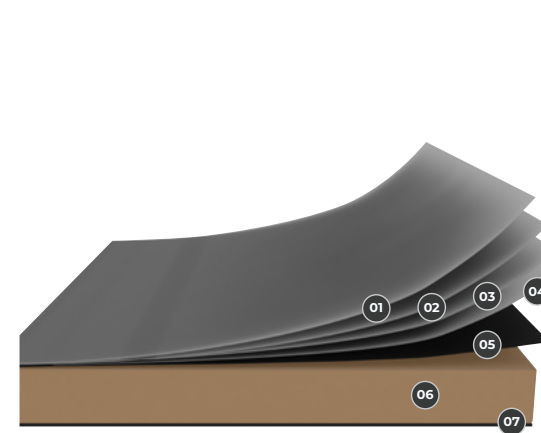


EASY TO CLEAN



MAXIMUM SIZE

Glossmax Pro Panel Features



- 01 TOP COAT / UV ACRYLIC LACQUER**
100% UV acrylic lacquer
- 02 INTERMEDIATE COAT**
- 03 BASE COAT**
- 04 PERMANENT ELASTIC FUNCTIONAL LAYER (PUR HOTMELT)**
Patented glue providing 100% chemical adhesion
- 05 IMPREGNATED PAPER**
Impregnated decorative paper
- 06 MDF / PARTICLE BOARD**
Strong board with high pressure resistance that fits for E1 norms
- 07 IMPREGNATED PAPER**
Impregnated decorative paper

The density changes due to the thickness.

TYPE OF PANEL	MDF / Particle Board
PANEL THICKNESS*	8-18 mm
PANEL SIZE	2100x2800 mm
FRONT FACE OF THE PANEL	High gloss and scratch resistant decorative surface obtained as a result of applying glue and 100% UV acrylic lacquer on the surface of melamine faced MDF or Particle Board, using the Calender Coating Inert technology
REAR FACE OF THE PANEL	Impregnated paper

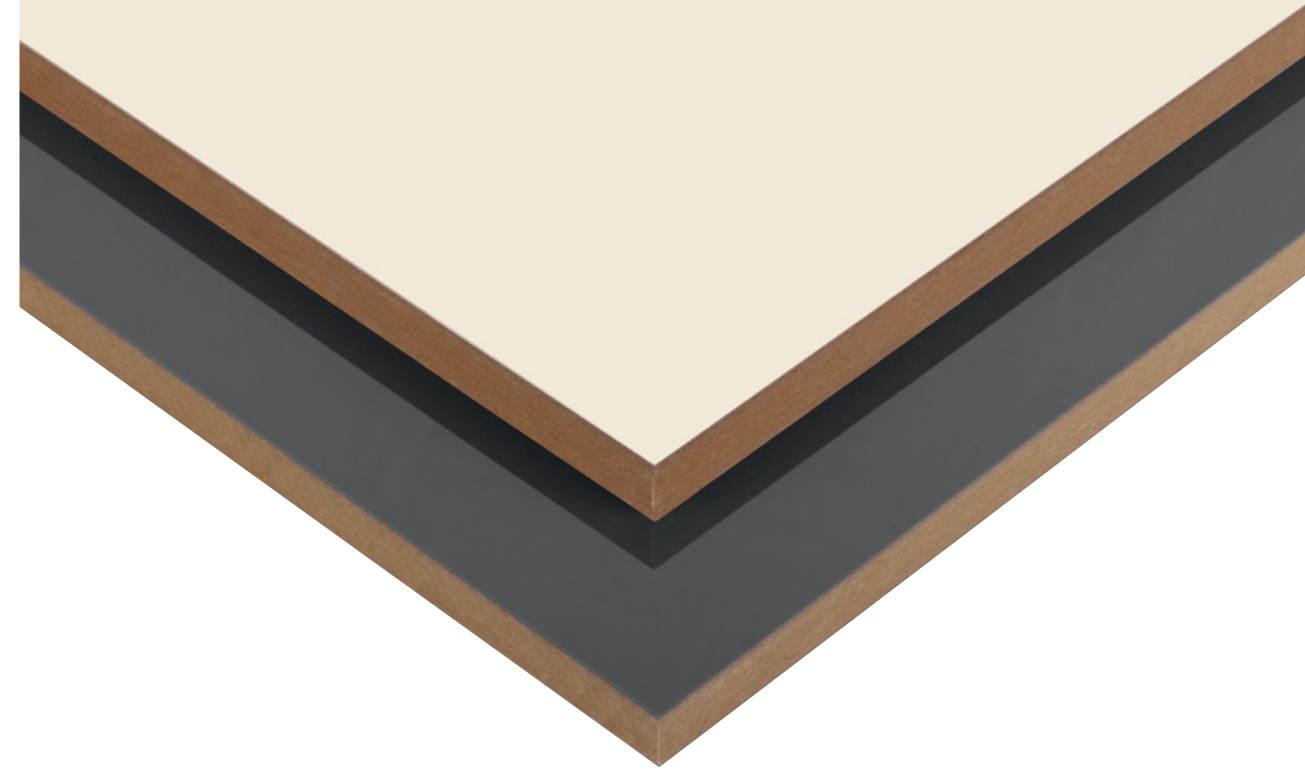
**Manufacture in particular dimensions in the specified ranges requires a particular order quantity. For details, please contact Sales Representatives.*

PANEL USER MANUAL

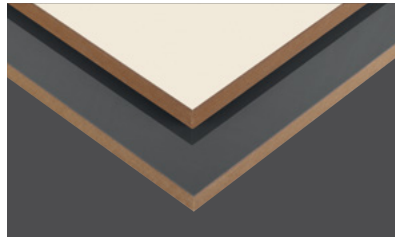
Glossmax Pro Technical Features

CONTROL CRITERIA	TEST STANDARD	UNIT OR FEATURE	THICKNESS RANGE	
			TEKNOLAM	MEDELAM
			6<t≤9 13<t≤20	6<t≤9 9<t≤12 12<t≤19
TOLERANCES ON NOMINAL DIMENSIONS THICKNESS COMPARED TO RATED VALUES THICKNESS t RELATIVE TO NOMINAL VALUE	EN 14323	mm	<15 / ≥15 to 20 mm ; +0,5 /-0,3; >20 mm; ± 0,5 <15 / ≥15 to 20 mm ; t ^{max} - t ^{min} ≤ 0,6	
LENGTH AND WIDTH	EN 14323	mm	± 5	
FLATNESS	EN 14323	mm/m	Only for balanced surfaces which t≥15;≤ 2	
EDGE DAMAGE	EN 14323	mm	≤ 10	
SURFACE DEFECTS	EN 14323	mm ² /m ²	point ≤ 2	
		mm/m ²	line ≤ 20	
RESISTANCE TO SCRATCHING	EN 14323	N	Class B 2st<3,5	
RESISTANCE TO STAINING	EN 14323	Rating	≥ 3	
RESISTANCE TO STAINING	EN 14323	Rating	≥ 3	
GLOSS	EN 14323	Gloss Unit (GU)	20° min.85	
CROSS CUT	EN ISO 2409	Class	0 or 1	
SURFACE SOUNDNESS	EN 311	N/mm ²	≥ 1	
FORMALDEHYDE RELEASE	EN ISO 12460-3	mg/m ² air	E0 < 1,75 E1 ≤ 3,5 E2; 3,5 < release ≤ 8	
MIRROR EFFECT	TSE K 479	Observation	Min.6	
LIGHT FASTNESS (XENON ARC LAMP)	EN 15187	Scale	Grey Scale ≥ 4 Blue Wool > 6 Suitable for pigmented products only	

*For any detail about pigmented products resistant to UV rays, please consult the relevant "Sales Representative".



UV ACRYLIC LACQUERED GLOSS PANEL **GLOSSMAX**



GLOSSMAX (UV ACRYLIC LACQUERED GLOSS PANEL)

GLOSSMAX high gloss panel is a wooden panel with a decorative glossy surface, which is obtained by applying glue and UV acrylic lacquer on the surface of melamine faced MDF or Particle Board through various industrial processes using advanced and unique technology. After the hot coating process, which provides excellent chemical adhesion to the melamine faced surface, a superior surface is obtained compared to the other glossy surfaces in terms of cutting quality and workability.

Areas Of Usage

Kitchen cabinet, bathroom cabinet, bedroom, rail cabinet, teen room, office furniture, decoration and all modular products...

*Suitable for indoor usage.

Panel Advantages

MAXIMUM PERFORMANCE

High gloss and surface resistance...

With patented PUR glue application technology, it has a much better cutting and processing capability than its counterparts in the market. High protection is provided until the moment of delivery by the foil and protecting foam on the surface during the process.

MAXIMUM ADAPTATION

In the same color and patterns with Kastamonu Entegre Medelam&Teknolam...

One side of the decorative panel is glossy and the other side is covered with the same colored decor paper. It can be applied to all melamine faced decors. In this way, color integrity is ensured on the rear and front surfaces of the panels. The decorative panel attracts attention with its high level of natural surface appearance. It is produced as MDF and Particle Board with rich color variety.

MAXIMUM SERVICE

High capacity and high service quality of Kastamonu Entegre...

MAXIMUM SIZE

2100x2800 mm in size, far from the limited work requirement...

The world's first 2100x2800 mm panel size provides users with an efficient optimization opportunity that offers low waste production solutions.



HIGH GLOSS



HIGH SCRATCHING
RESISTANCE



RESISTANCE TO CHEMICALS
AND STAIN



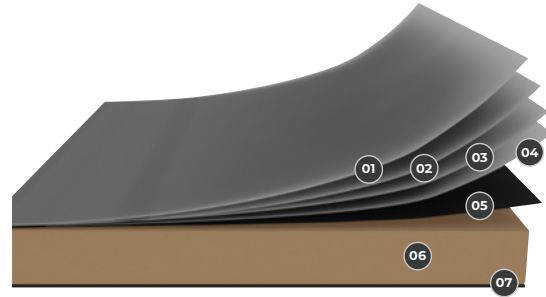
EASY TO CLEAN



HIGH CRACKING
RESISTANCE



MAXIMUM SIZE



- 01 TOP COAT / UV ACRYLIC LACQUER**
100% UV acrylic lacquer
- 02 INTERMEDIATE COAT**
- 03 BASE COAT**
- 04 PERMANENT ELASTIC FUNCTIONAL LAYER (PUR HOTMELT)**
Patented glue providing 100% chemical adhesion
- 05 IMPREGNATED PAPER**
Impregnated decorative paper
- 06 MDF / PARTICLE BOARD**
Strong board with high pressure resistance that fits for E1 norms
- 07 IMPREGNATED PAPER**
Impregnated decorative paper

The density changes due to the thickness.

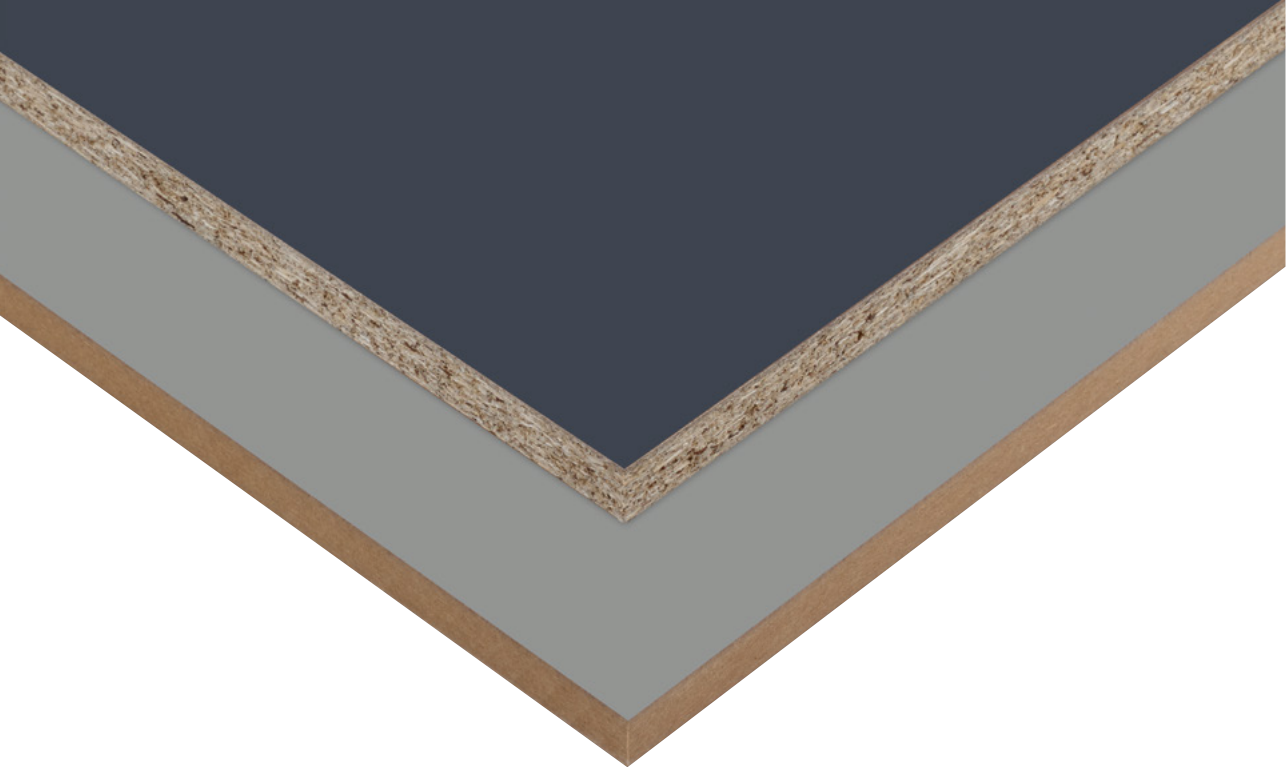
TYPE OF PANEL	MDF-PARTICLE BOARD
PANEL THICKNESS*	8-18 mm
PANEL SIZE	2100x2800 mm
FRONT FACE OF THE PANEL	A bright and scratch-proof decorative surface obtained as a result of application of glue and %100 UV acrylic lacquer to the surface of the melamine-faced MDF or Particle Board
REAR FACE OF THE PANEL	Impregnated paper

**Manufacture in particular dimensions in the specified ranges requires a particular order quantity. For details, please contact Sales Representatives.*

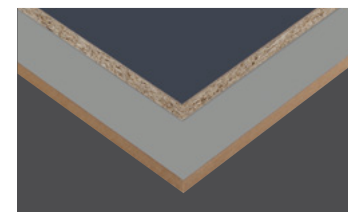
Glossmax Technical Features

CONTROL CRITERIA	TEST STANDARD	UNIT OR FEATURE	THICKNESS RANGE	
			TEKNOLAM	MEDELAM
			6<t≤13 13<t≤20	6<t≤9 9<t≤12 12<t≤19
TOLERANCES ON NOMINAL DIMENSIONS THICKNESS COMPARED TO RATED VALUES THICKNESS t RELATIVE TO NOMINAL VALUE	EN 14323	mm	<15 / ≥15 to 20 mm ; +0,5 /-0,3; >20 mm; ± 0,5 <15 / ≥15 to 20 mm ; t ^{max} - t ^{min} ≤ 0,6	<15 / ≥15 to 20 mm ; +0,5 /-0,3; >20 mm; ± 0,5 <15 / ≥15 to 20 mm ; t ^{max} - t ^{min} ≤ 0,6
LENGTH AND WIDTH	EN 14323	mm	± 5	
FLATNESS	EN 14323	mm/m	Only for balanced surfaces which t≥15 mm; ≤ 2 only	
EDGE DAMAGE	EN 14323	mm	≤ 10	
SURFACE DEFECTS	EN 14323	mm ² /m ²	point ≤ 2	
		mm/m ²	line ≤ 20	
RESISTANCE TO SCRATCHING	EN 14323	N	Class B 2≤t<3,5	
RESISTANCE TO CRACKING	EN 14323	Rating	≥ 3	
RESISTANCE TO STAINING	EN 14323	Rating	≥ 3	
GLOSS	EN 14323	Gloss Unit (GU)	20° min.85	
CROSS CUT	EN ISO 2409	Class	0 or 1	
SURFACE SOUNDNESS	EN 311	N/mm ²	≥ 1	
FORMALDEHYDE RELEASE	EN ISO 12460-3	mg/m ² air	E0 < 1,75, E1 ≤ 3,5 E2, 3,5 < release ≤ 8	
MIRROR EFFECT	TSE K 479	Observation	Min.6	
LIGHT FASTNESS (XENON ARC LAMP)	EN 15187	Scale	Grey Scale ≥ 4 Blue Wool > 6 Suitable For pigmented products only	

**For any detail about pigmented products resistant to UV rays, please consult the relevant "Sales Representative".*



UV ACRYLIC LACQUERED MATT PANEL **MATTPLUS**



MATTPLUS (UV ACRYLIC LACQUERED MATT PANEL)

MATTPLUS extra matt panels are wooden panels with decorative extra matt surface which is obtained by application of glue and 100% UV acrylic lacquer on the surface of melamine faced MDF or Particle Board with an advanced and unique technology. High quality surfaces obtained by providing excellent distribution of light reflected by Excimer technology, brings out the perfect mattness with its natural appearance. In addition to the soft touch feeling, the products with high fingerprint resistance and easy to clean feature reveal the nobility of mattness in wood. The surfaces obtained during this process, which is based upon the principle of extra mattness and quality, are unrivaled in terms of applied processes.

Areas Of Usage

Kitchen cabinet, bathroom cabinet, bedroom, rail cabinet, teen room, office furniture, decoration and all modular products...

*Suitable for indoor usage.

Panel Advantages

MAXIMUM PERFORMANCE

Super mattness and surface resistance...

With patented PUR glue application technology, it has a much better cutting and processing capability than its counterparts in the market. High protection is provided until the moment of delivery by the foil and protecting foam on the surface during the process.

MAXIMUM ADAPTATION

In the same colors and patterns with the Kastamonu Entegre Medelam&Teknolam...

One side of the decorative panel is matt and the other side is covered with the same colored decor paper. It can be applied to all melamine faced decors. In this way, color integrity is ensured on the rear and front surfaces of the panels. The decorative panel attracts attention with its high level of natural surface appearance. It is produced as MDF and Particle Board with rich color variety.

MAXIMUM SERVICE

Kastamonu Entegre's high production capacity and superior service quality...

MAXIMUM SIZE

2100x2800 mm in size, far from the limited work requirement...

The world's first 2100x2800 mm panel size provides users with an efficient optimization opportunity that offers low waste production solutions.



SUPER MATT (SOFT TOUCH)



SUPERIOR SURFACE QUALITY



HIGH CRACKING RESISTANCE



RESISTANCE TO CHEMICALS AND STAIN



HIGH SCRATCHING RESISTANCE



EASY TO CLEAN

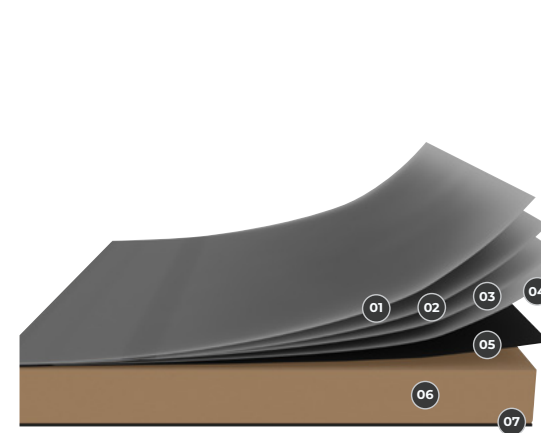


HIGH FINGERPRINT RESISTANCE



MAXIMUM SIZE

Mattplus Panel Features



- 01 TOP COAT / UV ACRYLIC LACQUER**
100% UV acrylic lacquer
- 02 INTERMEDIATE COAT**
- 03 BASE COAT**
- 04 PERMANENT ELASTIC FUNCTIONAL LAYER (PUR HOTMELT)**
Patented glue providing 100% chemical adhesion
- 05 IMPREGNATED PAPER**
Impregnated decorative paper
- 06 MDF / PARTICLE BOARD**
Strong board with high pressure resistance that fits for E1 norms
- 07 IMPREGNATED PAPER**
Impregnated decorative paper

The density changes due to the thickness.

TYPE OF PANEL	MDF-PARTICLE BOARD
PANEL THICKNESS*	8-18 mm
PANEL SIZE	2100x2800 mm
FRONT FACE OF THE PANEL	Extra matt and scratch resistant decorative surface obtained as a result of applying glue and 100% UV acrylic lacquer on the surface of melamine faced MDF or Particle Board, using the Excimer technology
REAR FACE OF THE PANEL	Impregnated paper

**Manufacture in particular dimensions in the specified ranges requires a particular order quantity. For details, please contact Sales Representatives.*

PANEL USER MANUAL

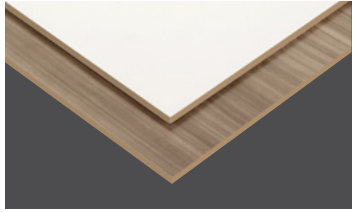
Mattplus Technical Features

CONTROL CRITERIA	TEST STANDARD	UNIT OR FEATURE	THICKNESS RANGE	
			TEKNOLAM	MEDELAM
			6<t≤9 13<t≤20	6<t≤9 9<t≤12 12<t≤19
TOLERANCES ACCORDING TO NOMINAL DIMENSIONS THICKNESS COMPARED TO RATED VALUE THICKNESS t WITHIN THE BOARD	EN 14323	mm	<15 / ≥15 to 20 mm ; +0,5 /-0,3; >20 mm; ± 0,5 <15 / ≥15 to 20 mm; t ^{max} - t ^{min} ≤ 0,6	
LENGTH AND WIDTH	EN 14323	mm	± 5	
FLATNESS	EN 14323	mm/m	Only for balance surfaces which t ≥ 15mm; ≤ 2	
EDGE DAMAGE	EN 14323	mm	≤ 10	
SURFACE DEFECTS	EN 14323	mm ² /m ²	point ≤ 2	
		mm/m ²	line ≤ 20	
RESISTANCE TO SCRATCHING	EN 14323	N	Class B 2st<3,5	
RESISTANCE TO CRACKING	EN 14323	Rating	≥ 3	
RESISTANCE TO STAINING	EN 14323	Rating	≥ 3	
CROSS CUT	EN ISO 2409	Class	0 or 1	
SURFACE SOUNDNESS	EN 311	N/mm ²	≥ 1	
FORMALDEHYDE RELEASE	EN ISO 12460-3	mg/m ² air	<1,75 (E0), ≤3,5 (E1), 3,5 < release ≤ 8 (E2)	E0 < 1,75, E1 ≤ 3,5 E2, 3,5 < release ≤ 8
LIGHT FASTNESS (XENON ARC LAMP)	EN 15187	Scale	Grey Scale ≥ 4 Blue Wool > 6 Suitable for pigmented products only	

*For any detail about pigmented products resistant to UV rays, please consult the relevant "Sales Representative".



PRINTED PANEL
PRINTPAN



PRINTPAN (MDF)

It is obtained by painting single or both surfaces of the MEDEPAN boards with water-based paint in flat and wooden decors. It is compatible with MEDELAM patterns. It offers high quality and reasonable price options. It is environment-friendly.

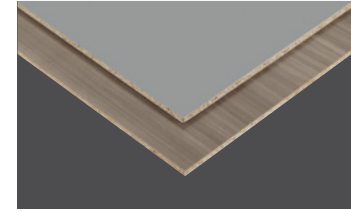
Areas Of Usage

It is used as furniture back panels, closing elements, drawer floors, door panels, drawers and skirting boards.

Dimension Of The Produced Products

WIDTH (mm)	LENGTH (mm)	THICKNESS (mm)*
1830-2100	1700-3670	2,7-18

**Manufacture in particular dimensions in the specified ranges requires a particular order quantity. For details, please contact Sales Representatives.*



PRINTPAN (PARTICLE BOARD)

It is obtained by painting single or both surfaces of the TEKNOPAN - YONGAPAN boards with water-based paint in flat and wooden decors. It is compatible with TEKNOLAM - YONGALAM patterns. It offers high quality and reasonable price options. It is environment-friendly.

Areas Of Usage

It is used as furniture back panels, closing elements, drawer floors, door panels, drawers and skirting boards.

Dimension Of The Produced Products

WIDTH (mm)	LENGTH (mm)	THICKNESS (mm)*
1830-2100	2440-3660	8-30

**Manufacture in particular dimensions in the specified ranges requires a particular order quantity. For details, please contact Sales Representatives.*

MAINTENANCE INSTRUCTIONS

As a consumer, the usage and maintenance conditions that you should pay attention to in the use and maintenance of the KASTAMONU brand panel products you have purchased are as follows:

CUTTING AND SIZING IN THE UV ACRYLIC LACQUER PRODUCTS USED WITH FOIL AND MATTRESSES

- The protecting foam of the surface should be removed before cutting.
- The protective transparent foil coating should be removed within 24 hours after the installation is completed, latest 3 months after delivery.
- Products that are covered with protective foil (for protection purposes) minimize the damage that may occur during the production process and protect the glossy panel until the finished product. Therefore, the protective foil should not be removed until the finished product in order to minimize such damages.
- While sizing the panel, if needed after removing the protecting foam, it is required to leave a trim size of minimum 15 mm from 4 sides each before removing the transparent foil.

IN THE PVC / PET COATED PRODUCTS

- Color consistency should be checked before cutting the products due to the possibility of color and hue difference between the batches.
- In order to be able to cut panel products without any problems, care should be taken that the ambient temperature is approximately 25 degrees.
- There can be at most 1 pimple with a diameter smaller than 5 mm on 1 m² surface. It should be taken into account that 2 pimples on a 1 m² surface are within the tolerance limits provided that the diameter is less than 3 mm and the distance to each other is not less than 25 cm.
- Swelling effect/non sticking tolerance especially after cutting on short edge 5 mm min. should be considered within the standard. A trim margin of 5 mm should be left.

TOOLS

For the best-quality coating of the product following instrument using guidelines are important:

- Sizing can be made with standard wood working tools.
- The tools must be sharp and freshly whetted.
- Hard metal or diamond-tipped cutting edges will provide the best results.
- Use the cutting and seeding rates recommended by the authorized tool supplier.
- Perform a regular and sufficient new sharpening program in accordance with the recommendations of the tool supplier.

It is necessary to provide proper settings for the treatment of surfaces, which means that all tools must be kept sharp. The machine must be stabilized, adjusted and kept in good condition. All equipment must be as clean as possible.

- The surface placed in protective transparent foil may be faced upwards during the cutting process. There is no need to invert the panels.
- For a cleaner cut, a plotter saw must be used at the bottom side. Cutting without a plotter saw is not recommended.
- After banding the edges, it is recommended to apply a pre-mill.
- The panels must always be firmly supported and placed in the machine while being processed.
- The snapping effect of the edges must be checked during cutting. If the snap effect exceeds your tolerance, it means that the saw is blunt. The cutting must be continued with the whetted saw blade.
- Products that have been cut with 45 degrees should be turned into covers as soon as possible.
- In order to prevent the damage to the surface, the surface protection foil must not be removed until the installation is completed.

SURFACE AND FLAW CONTROL

A micro defect that can be addressed to as a defect can be detected under the following conditions (which apply to stains or debris as well as fibers or scratches). The evaluation is made in sunlight-like lighting(5000 Kelvin).

- Visibility at least 700 mm from the surface of the panel
- Vision time: maximum 20 sec
- Light intensity: 800-1600 lux
- Inclination angle of the product: 45 degrees

MAINTENANCE AND CLEANING

- The protective transparent foil coating should not be removed until the installation is completed.

The protective transparent foil coating on the products should be removed within 24 hours after the installation is completed and after waiting for 2 hours, the surface should be wiped with a damp cloth or wood cleaner. For cleaning, it is recommended to use a nonabrasive cloth moistened with soap and water and then dry immediately.

Important: Do not use dishwashing sponges, abrasive and alcohol-based cleaners.

STORAGE AND STORAGE CONDITIONS

- The products are designed for indoor spaces. This should be considered in the application to be made. The products should not be used outdoors, in the garden and in areas that are washed with water and exposed to direct steam.
- The products should not be exposed to direct sunlight. Direct sunlight will cause the surfaces to fade.
- The plates covered with protective transparent foil should not be directly exposed to sunlight (infrared rays). The prints on the foil may leave marks on the sheet when exposed to sunlight.
- The product should be stored and treated in a suitable environment with no air circulation and as far as possible free from dust and small substances.
- The main standard of our MDF boards we produce in our facilities is TS EN 622-5 Fiber Boards-Properties-Requirements standard for Dry Process Boards (MDF) and the main standard of our Particle Boards is TS EN 312 Particle Board-Features standard.

The boards used in dry conditions are expressed only as suitable for use in the Hazard Class 1 specified in EN 335-3 (Durability of Wood and Wood Based Material; Description of Hazard Classes of Biodegradation Degree Section 3: Application to Wood and Wood Based Boards). In 4.5.1 Hazard Class 1 of this standard:

"Chipboards and Fiberboards can have a water content less than that in an environment with an air temperature of 20 ° C and 65% humidity in the open air during the entire application period. In this case, Fiber and Particleboards are considered dry and as a result. Also, the risk of abrasion that may occur due to surface molds, surface stains or harmful wood fungi can be considered insignificant. Due to the unique structure of Fiber Boards, there is no risk of being affected by harmful wood insects except termites."

It is suitable for use in signs suitable for humid conditions in Hazard Class 1 and Hazard Class 2 specified in EN 335-3. Hazard Class 1 description above. In the Hazard Class 2 of this standard:

"Chipboards and Fiberboards are unprotected in open air, in an environment with 20° C air temperature and 90% humidity, so the rate of water in it may rise due to the environment it is in. This creates an environment for the development of harmful wood fungi."

- The products should be protected from direct contact with heater and air conditioner.

- While the panels are being processed, they should be stacked carefully in order to prevent dents, collapses and fractures on the edges and corners, and the panels should not be kept for a long time to prevent rotation.
- In addition to the top and bottom plates of the stack, other plates in the package react faster to changing environmental influences (climate). Therefore, cover plates should be used.
- During the handling of the product during the transportation phase, the products should be lifted without rubbing against each other.
- When the product is placed horizontally in the warehouse, it should be ensured that it is stacked on the wedge at equal intervals in a way to prevent rotation. In the stacks made one on top of the other, the wedges should be aligned and in the same quantity.
- It should be avoided to stock a large number of products vertically, support should be used for vertical stocking.
- Color tones should be checked in your successive works.
- The products should not be used in open areas, gardens and areas that are washed with water and exposed to direct steam.

Avoid exposure of the product to the following conditions during transport, storage and processing!

- Storage in the immediate vicinity of heating sources (presses/dryers)
- Exposure to heat and sunlight (external infrared light)
- Improper ventilation with increased air humidity
- Storage under direct flow

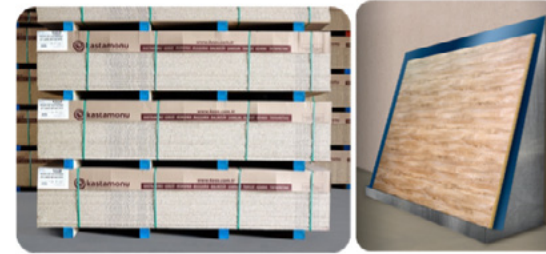
CHIPBOARD, MDF, CHIPBOARD, TECHNOLAM, MDFLAM

- Wedges should be of equal thickness and have a smooth surface. Wedge lengths should be compatible with the width of the plate stack.
- The wedges between the packages in the stack must be aligned.
- If the plate thickness is over 15 mm, at least 4 wedges should be used in any case and the distance between the wedges must be equal.
- If the plate thickness is less than 15 mm, at least 5 wedges must be used in any case and the spacing between wedges must be equal.

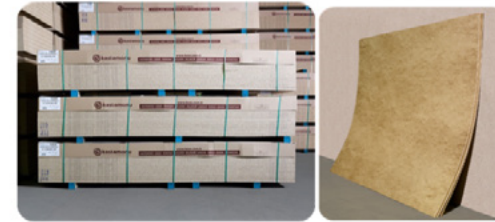
MATTPLUS, GLOSSMAXPRO, GLOSSMAX, ACRYLIC, EVOGLOSS

- The stacking height should be kept as 4 pallets.

CORRECT



WRONG



- The vertical storage is only valid for a small number of wood-based plates.
- If the vertical storage is used, the angle between the wall and the vertical racks should have a minimum inclination of 10 degrees.



- The plates should be raised upright. Thus, the deformation that may occur due to the friction of decorative surfaces to each other is prevented.

PANEL USER MANUAL

GENEL BİLGİLER



- Wood-based products should be handled in a closed storage / workshop area with a stable climate, (must be higher than approx. 10° C and have 50-60% air humidity)
- It should not be stored in the immediate vicinity of heating devices and other heat sources, and should not be exposed to direct sunlight (UV rays).
- There should not be unstable weather conditions caused by increasing humidity.
- The boards should not be stored in areas with drafts or exposed to open air conditions.

PROCESSING RULES

- These rules are merely pieces of advice. They are issued without warranty and liability and do not constitute a special contract. Before using this product, the user is obliged to test whether the specifications that are specified in the "Specifications Table" are appropriate for their particular purpose or projects.
- The product is continually improving as in tool and machine technologies, processes and value-adding activities.
Please follow for the updates and current product regulations.
- The seller is obliged to deliver the usage and maintenance instructions prepared for the consumer to the consumer.

bridging **nature and life**

www.keas.com.tr

